

## RAMP3 polyclonal antibody

Catalog: BS61875

Host: Rabbit

Reactivity: Human, Mouse, Rat

### Background:

Receptor activity-modifying proteins (RAMPs) are transmembrane accessory proteins that influence the pharmacological profiles of the calcitonin receptor-like receptors (CRLR). RAMPs associate with CRLR in the endoplasmic reticulum and facilitate the glycosylation and transport of CRLR to the cell surface, where the mature protein then operates as a receptor for two structurally related vasodilatory peptides, calcitonin-gene-related peptide (CGRP) or adrenomedullin (ADM). RAMP-1 associating with CRLR confers a CGRP receptor, while RAMP-2 and RAMP-3 preferentially induce a responsiveness to ADM. RAMP proteins, including RAMP-1, RAMP-2 and RAMP-3, are structurally similar as they are type I receptors, which have a single extracellular N-terminus and a cytoplasmic C-terminus, and they share approximately 55% sequence similarity. RAMP-1 expression is highest in the uterus, brain and gastrointestinal tract, whereas RAMP-2 and RAMP-3 are highest in lung, breast and fetal tissues.

### Product:

Rabbit IgG, 1mg/ml in PBS with 0.02% sodium azide, 50% glycerol, pH7.2

### Molecular Weight:

~ 16 kDa

### Swiss-Prot:

O60896

### Purification&Purity:

The antibody was affinity-purified from rabbit antiserum by affinity-chromatography using epitope-specific im-

munogen and the purity is > 95% (by SDS-PAGE).

### Applications:

WB: 1:500~1:1000

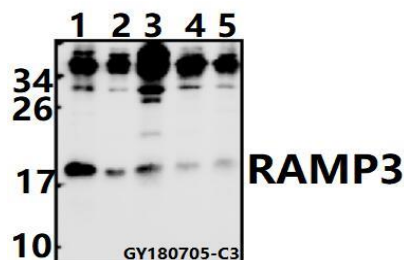
### Storage&Stability:

Store at 4 °C short term. Aliquot and store at -20 °C long term. Avoid freeze-thaw cycles.

### Specificity:

RAMP3 pAb detects endogenous levels of RAMP3 protein.

### DATA:



Western blot (WB) analysis of RAMP3 pAb at 1:500 dilution

Lane1:H1792 whole cell lysate(20ug)

Lane2:MCF-7 whole cell lysate(10ug)

Lane3:Myla2059 whole cell lysate(40ug)

Lane4:3T3-L1 whole cell lysate(40ug)

Lane5:PMVEC whole cell lysate(40ug)

### Note:

For research use only, not for use in diagnostic procedure.

### Bioworld Technology, Inc.

Add: 1660 South Highway 100, Suite 500 St. Louis Park, MN 55416, USA.

Email: [info@bioworld.com](mailto:info@bioworld.com)

Tel: 6123263284

Fax: 6122933841

### Bioworld technology, co. Ltd.

Add: No 9, weidi road Qixia District Nanjing, 210046, P. R. China.

Email: [info@biogot.com](mailto:info@biogot.com)

Tel: 0086-025-68037686

Fax: 0086-025-68035151