

## RPS27L polyclonal antibody

Catalog: BS61847

Host: Rabbit

Reactivity: Human, Mouse, Rat

### BackGround:

Ribosomal protein S27-like (RPS27L) is a homologue of 40S ribosomal subunit protein S27 (RPS27) with an unknown function. Using microarray analysis, RPS27L was found to be consistently up-regulated in 5-fluorouracil (5-FU) and adriamycin (ADR)-treated colorectal HCT116 cells in a p53-dependent manner.

### Product:

Rabbit IgG, 1mg/ml in PBS with 0.02% sodium azide, 50% glycerol, pH7.2

### Molecular Weight:

~ 15 kDa

### Swiss-Prot:

Q71UM5

### Purification&Purity:

The antibody was affinity-purified from rabbit antiserum by affinity-chromatography using epitope-specific immunogen and the purity is > 95% (by SDS-PAGE).

### Applications:

WB: 1:500~1:1000

### Storage&Stability:

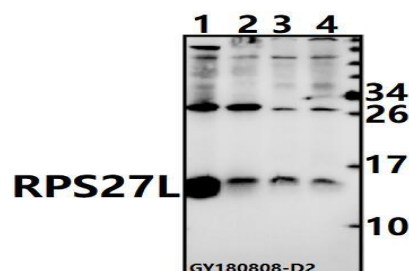
Store at 4 °C short term. Aliquot and store at -20 °C long

term. Avoid freeze-thaw cycles.

### Specificity:

RPS27L pAb detects endogenous levels of RPS27L protein.

### DATA:



Western blot (WB) analysis of RPS27L pAb at 1:500 dilution

Lane1: The Kidney tissue lysate of Mouse(40ug)

Lane2: The Kidney tissue lysate of Rat(40ug)

Lane3: A549 whole cell lysate(40ug)

Lane4: H1792 whole cell lysate(40ug)

### Note:

For research use only, not for use in diagnostic procedure.

### Bioworld Technology, Inc.

Add: 1660 South Highway 100, Suite 500 St. Louis Park, MN 55416, USA.

Email: [info@bioworld.com](mailto:info@bioworld.com)

Tel: 6123263284

Fax: 6122933841

### Bioworld technology, co. Ltd.

Add: No 9, weidi road Qixia District Nanjing, 210046, P. R. China.

Email: [info@biogot.com](mailto:info@biogot.com)

Tel: 0086-025-68037686

Fax: 0086-025-68035151