

ACR polyclonal antibody

Catalog: BS61765

Host: Rabbit

Reactivity: Human

BackGround:

Acrosin, a member of the peptidase S1 family, is a major protease present in the acrosome of mature mammalian spermatozoa. Acrosin is a typical serine proteinase with trypsin-like cleavage specificity. The zymogen form, proacrosin, is the precursor of Acrosin synthesized only in the postmeiotic stages of spermatogenesis. The active enzyme functions in the lysis of the zona pellucida, allowing the penetration of sperm through the innermost glycoprotein layers of the ovum.

Product:

Rabbit IgG, 1mg/ml in PBS with 0.02% sodium azide, 50% glycerol, pH7.2

Molecular Weight:

~ 46 kDa

Swiss-Prot:

P10323

Purification&Purity:

The antibody was affinity-purified from rabbit antiserum by affinity-chromatography using epitope-specific immunogen and the purity is > 95% (by SDS-PAGE).

Applications:

WB: 1:500~1:1000

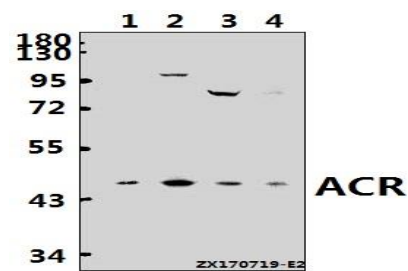
Storage&Stability:

Store at 4 °C short term. Aliquot and store at -20 °C long term. Avoid freeze-thaw cycles.

Specificity:

ACR polyclonal antibody detects endogenous levels of ACR protein.

DATA:



Western blot (WB) analysis of ACR polyclonal antibody at 1:500 dilution

Lane1:HepG2 whole cell lysate(40ug)

Lane2:HEK293T whole cell lysate(40ug)

Lane3:MCF-7 whole cell lysate(40ug)

Lane4:L02 whole cell lysate(40ug)

Note:

For research use only, not for use in diagnostic procedure.

Bioworld Technology, Inc.

Add: 1660 South Highway 100, Suite 500 St. Louis Park, MN 55416, USA.

Email: info@bioworld.com

Tel: 6123263284

Fax: 6122933841

Bioworld technology, co. Ltd.

Add: No 9, weidi road Qixia District Nanjing, 210046, P. R. China.

Email: info@biogot.com

Tel: 0086-025-68037686

Fax: 0086-025-68035151