

RRP7A/RRP7B polyclonal antibody

Catalog: BS61743

Host: Rabbit

Reactivity: Human, Mouse, Rat

BackGround:

RRP7A (ribosomal RNA processing 7 homolog A), also known as CGI-96 or gastric cancer antigen Zg14, is a 280 amino acid protein that contains one RRM domain. RRP7A is encoded by a gene that maps to human chromosome 22. Mutations in several of the genes that map to chromosome 22 are involved in the development of Phe-lan-McDermid syndrome, Neurofibromatosis type 2, autism and schizophrenia. Additionally, translocations between chromosomes 9 and 22 may lead to the formation of the Philadelphia chromosome and the subsequent production of the novel fusion protein Bcr-Abl, a potent cell proliferation activator found in several types of leukemias.

Product:

Rabbit IgG, 1mg/ml in PBS with 0.02% sodium azide, 50% glycerol, pH7.2

Molecular Weight:

~ 32 kDa

Swiss-Prot:

Q9Y3A4/Q9NSQ0

Purification&Purity:

The antibody was affinity-purified from rabbit antiserum by affinity-chromatography using epitope-specific immunogen and the purity is > 95% (by SDS-PAGE).

Applications:

WB: 1:500~1:1000

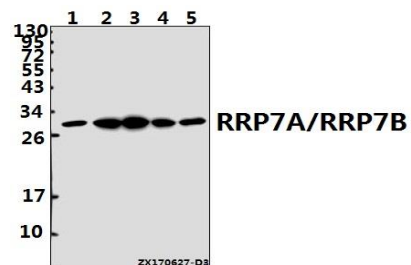
Storage&Stability:

Store at 4 °C short term. Aliquot and store at -20 °C long term. Avoid freeze-thaw cycles.

Specificity:

RRP7A/RRP7B polyclonal antibody detects endogenous levels of RRP7A/RRP7B protein.

DATA:



Western blot (WB) analysis of RRP7A/RRP7B polyclonal antibody at 1:500 dilution

Lane1:CT26 whole cell lysate(40ug)

Lane2:C6 whole cell lysate(40ug)

Lane3:HEK293T whole cell lysate(40ug)

Lane4:A549 whole cell lysate(40ug)

Lane5:MCF-7 whole cell lysate(40ug)

Note:

For research use only, not for use in diagnostic procedure.

Bioworld Technology, Inc.

Add: 1660 South Highway 100, Suite 500 St. Louis Park, MN 55416, USA.

Email: info@bioworld.com

Tel: 6123263284

Fax: 6122933841

Bioworld technology, co. Ltd.

Add: No 9, weidi road Qixia District Nanjing, 210046, P. R. China.

Email: info@biogot.com

Tel: 0086-025-68037686

Fax: 0086-025-68035151