

UBE2A/UBE2B polyclonal antibody

Catalog: BS61735

Host: Rabbit

Reactivity: Human, Mouse, Rat

BackGround:

The ubiquitin-conjugating (UBC) enzymes HR6A and HR6B are the mammalian orthologues of the *Saccharomyces cerevisiae* Rad6 gene products. In *S. cerevisiae*, Rad6 facilitates cell cycle progression and ubiquitinates histone H2B. In vivo phosphorylation of HR6A Ser120 by cyclin-dependent kinases is thought to be important for the coordination and timing of ubiquitination events involved in cell cycle progression. In response to DNA damage, HR6A is known to interact physically with p53 and p14ARF, but knockout mice lacking HR6A or HR6B exhibit normal DNA damage responses. HR6B knockout males exhibit defective spermatogenesis, while HR6A knockout females fail to produce viable offspring.

Product:

Rabbit IgG, 1mg/ml in PBS with 0.02% sodium azide, 50% glycerol, pH7.2

Molecular Weight:

~ 17 kDa

Swiss-Prot:

P49459/P63146

Purification&Purity:

The antibody was affinity-purified from rabbit antiserum by affinity-chromatography using epitope-specific immunogen and the purity is > 95% (by SDS-PAGE).

Applications:

WB: 1:500~1:1000

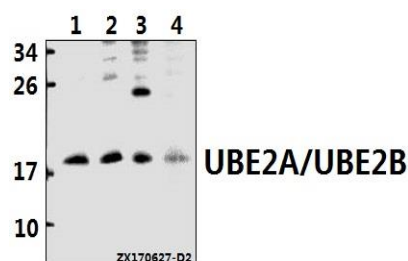
Storage&Stability:

Store at 4 °C short term. Aliquot and store at -20 °C long term. Avoid freeze-thaw cycles.

Specificity:

UBE2A/UBE2B polyclonal antibody detects endogenous levels of UBE2A/UBE2B protein.

DATA:



Western blot (WB) analysis of UBE2A/UBE2B polyclonal antibody at 1:500 dilution

Lane1:MCF-7 whole cell lysate(40ug)

Lane2:A549 whole cell lysate(40ug)

Lane3:C6 whole cell lysate(40ug)

Lane4:MEF whole cell lysate(40ug)

Note:

For research use only, not for use in diagnostic procedure.

Bioworld Technology, Inc.

Add: 1660 South Highway 100, Suite 500 St. Louis Park, MN 55416, USA.

Email: info@bioworld.com

Tel: 6123263284

Fax: 6122933841

Bioworld technology, co. Ltd.

Add: No 9, weidi road Qixia District Nanjing, 210046, P. R. China.

Email: info@biogot.com

Tel: 0086-025-68037686

Fax: 0086-025-68035151