

Caveolin-2 polyclonal antibody

Catalog: BS61671

Host: Rabbit

Reactivity: Human, Mouse, Rat

Background:

The 21-24 kDa integral proteins, caveolins, are the principal structural components of the cholesterol/sphingolipid-enriched plasma membrane microdomain caveolae. Three members of the caveolin family (caveolin-1, -2, and -3) have been identified with different tissue distributions. Caveolins form hetero- and homo-oligomers that interact with cholesterol and other lipids. Caveolins are involved in diverse biological functions, including vesicular trafficking, cholesterol homeostasis, cell adhesion, and apoptosis, and are also implicated in neurodegenerative disease. Caveolins interact with multiple signaling molecules such as G α subunit, tyrosine kinase receptors, PKCs, Src family tyrosine kinases, and eNOS. It is believed that caveolins serve as scaffolding proteins for the integration of signal transduction. Phosphorylation at Tyr14 is essential for caveolin association with SH2 or PTB domain-containing adaptor proteins such as GRB7. Phosphorylation at Ser80 regulates caveolin binding to the ER membrane and entry into the secretory pathway.

Product:

Rabbit IgG, 1mg/ml in PBS with 0.02% sodium azide, 50% glycerol, pH7.2

Molecular Weight:

~ 18 kDa

Swiss-Prot:

P51636

Purification&Purity:

The antibody was affinity-purified from rabbit antiserum by affinity-chromatography using epitope-specific immunogen and the purity is > 95% (by SDS-PAGE).

Applications:

WB: 1:500~1:1000

IHC: 1:50~1:200

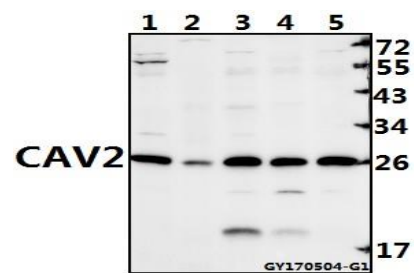
Storage&Stability:

Store at 4 °C short term. Aliquot and store at -20 °C long term. Avoid freeze-thaw cycles.

Specificity:

CAV2 polyclonal antibody detects endogenous levels of CAV2 protein.

DATA:



Western blot (WB) analysis of CAV2 polyclonal antibody at 1:500 dilution

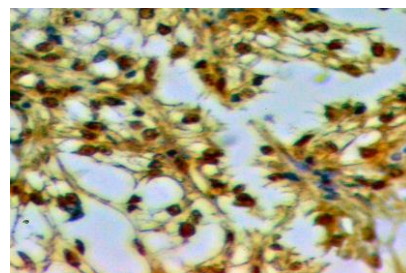
Lane1:CT26 whole cell lysate(40ug)

Lane2:The Kidney tissue lysate of Rat(40ug)

Lane3:A549 whole cell lysate(40ug)

Lane4:COS-7 whole cell lysate(40ug)

Lane5:Hela whole cell lysate(40ug)



Immunohistochemistry (IHC) analyzes of Caveolin-2 polyclonal antibody in paraffin-embedded human kidney cancer tissue at 1:50.

Note:

For research use only, not for use in diagnostic procedure.

Bioworld Technology, Inc.

Add: 1660 South Highway 100, Suite 500 St. Louis Park, MN 55416, USA.

Email: info@bioworld.com

Tel: 6123263284

Fax: 6122933841

Bioworld technology, co. Ltd.

Add: No 9, weidi road Qixia District Nanjing, 210046, P. R. China.

Email: info@biogot.com

Tel: 0086-025-68037686

Fax: 0086-025-68035151



PRODUCT DATA SHEET

Bioworld Technology, Inc.

Bioworld Technology, Inc.

Add: 1660 South Highway 100, Suite 500 St. Louis Park,
MN 55416, USA.

Email: info@bioworld.com

Tel: 6123263284

Fax: 6122933841

Bioworld technology, co. Ltd.

Add: No 9, weidi road Qixia District Nanjing, 210046,
P. R. China.

Email: info@biogot.com

Tel: 0086-025-68037686

Fax: 0086-025-68035151