

## REPS1 polyclonal antibody

Catalog: BS61660

Host: Rabbit

Reactivity: Human, Mouse, Rat

**Background:**

RalBP1-associated Eps domain-containing protein 1 may coordinate the cellular actions of activated EGF receptors and Ral-GTPases.

**Product:**

Rabbit IgG, 1mg/ml in PBS with 0.02% sodium azide, 50% glycerol, pH7.2

**Molecular Weight:**

~ 83 kDa

**Swiss-Prot:**

Q96D71

**Purification&Purity:**

The antibody was affinity-purified from rabbit antiserum by affinity-chromatography using epitope-specific immunogen and the purity is > 95% (by SDS-PAGE).

**Applications:**

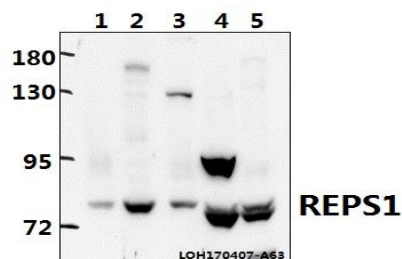
WB: 1:500~1:1000

**Storage&Stability:**

Store at 4 °C short term. Aliquot and store at -20 °C long term. Avoid freeze-thaw cycles.

**Specificity:**

REPS1 polyclonal antibody detects endogenous levels of REPS1 protein.

**DATA:**

Western blot (WB) analysis of REPS1 polyclonal antibody at 1:500 dilution

Lane1:A549 whole cell lysate(40ug)

Lane2:L02 whole cell lysate(40ug)

Lane3:HeLa whole cell lysate(40ug)

Lane4:The Testis tissue lysate of Rat(40ug)

Lane5:The Testis tissue lysate of Mouse(40ug)

**Note:**

For research use only, not for use in diagnostic procedure.

**Bioworld Technology, Inc.**

Add: 1660 South Highway 100, Suite 500 St. Louis Park, MN 55416, USA.

Email: [info@bioworld.com](mailto:info@bioworld.com)

Tel: 6123263284

Fax: 6122933841

**Bioworld technology, co. Ltd.**

Add: No 9, weidi road Qixia District Nanjing, 210046, P. R. China.

Email: [info@biogot.com](mailto:info@biogot.com)

Tel: 0086-025-68037686

Fax: 0086-025-68035151