

## RASL10B polyclonal antibody

Catalog: BS61627

Host: Rabbit

Reactivity: Human, Mouse, Rat

### Background:

Ras-like protein family member 10B, may facilitate the release of atrial natriuretic peptide by cardiomyocytes and hence play a role in the regulation of arterial pressure. RASL10B belongs to a Ras subfamily of potential tumor suppressors. Members of the Ras superfamily of small molecular weight GTPases play diverse and critical roles in mediating cellular responses to extracellular stimuli, including mitogenesis, cytoskeletal maintenance and re-arrangement, and integrin activation.

### Product:

Rabbit IgG, 1mg/ml in PBS with 0.02% sodium azide, 50% glycerol, pH7.2

### Molecular Weight:

~ 23 kDa

### Swiss-Prot:

Q96S79

### Purification&Purity:

The antibody was affinity-purified from rabbit antiserum by affinity-chromatography using epitope-specific immunogen and the purity is > 95% (by SDS-PAGE).

### Applications:

WB: 1:500~1:1000

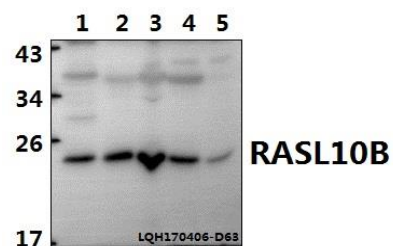
### Storage&Stability:

Store at 4 °C short term. Aliquot and store at -20 °C long term. Avoid freeze-thaw cycles.

### Specificity:

RASL10B polyclonal antibody detects endogenous levels of RASL10B protein.

### DATA:



Western blot (WB) analysis of RASL10B polyclonal antibody at 1:500 dilution

Lane1:A549 whole cell lysate(40ug)

Lane2:LOVO whole cell lysate(40ug)

Lane3:SP2/0 whole cell lysate(40ug)

Lane4:PMVEC whole cell lysate(40ug)

Lane5:Hela whole cell lysate(40ug)

### Note:

For research use only, not for use in diagnostic procedure.

### Bioworld Technology, Inc.

Add: 1660 South Highway 100, Suite 500 St. Louis Park, MN 55416, USA.

Email: [info@bioworld.com](mailto:info@bioworld.com)

Tel: 6123263284

Fax: 6122933841

### Bioworld technology, co. Ltd.

Add: No 9, weidi road Qixia District Nanjing, 210046, P. R. China.

Email: [info@biogot.com](mailto:info@biogot.com)

Tel: 0086-025-68037686

Fax: 0086-025-68035151