

## RBM26 polyclonal antibody

Catalog: BS61609

Host: Rabbit

Reactivity: Human, Mouse, Rat

### BackGround:

The RBM (RNA-binding motif) gene family encodes proteins with an RNA binding motif that have been suggested to play a role in the modulation of apoptosis. RBM26 (RNA binding motif protein 26) bears two RNA recognition motif (RRM) domains and a C3H1-type zinc finger. The function of RBM26 has not been characterized. Alternate names for RBM26 include CTCL tumor antigen se70-2, acidic rich RS domain containing 2, ARRS2, ZC3H17, PRO1777, C13orf10, and FLJ20957.

### Product:

Rabbit IgG, 1mg/ml in PBS with 0.02% sodium azide, 50% glycerol, pH7.2

### Molecular Weight:

~ 130 kDa

### Swiss-Prot:

Q5T8P6

### Purification&Purity:

The antibody was affinity-purified from rabbit antiserum by affinity-chromatography using epitope-specific immunogen and the purity is > 96% (by SDS-PAGE).

### Applications:

WB: 1:500~1:1000

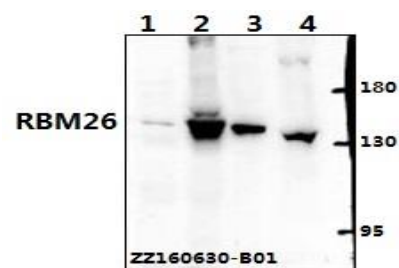
### Storage&Stability:

Store at 4 °C short term. Aliquot and store at -20 °C long term. Avoid freeze-thaw cycles.

### Specificity:

RBM26 polyclonal antibody detects endogenous levels of RBM26 protein.

### DATA:



Western blot (WB) analysis of RBM26 polyclonal antibody at 1:500 dilution

Lane1: HEK293T whole cell lysate(40ug)

Lane2: HCT116 whole cell lysate(40ug)

Lane3: The testis tissue lysate of Mouse(40ug)

Lane4: The testis tissue lysate of Rat(40ug)

### Note:

For research use only, not for use in diagnostic procedure.

### Bioworld Technology, Inc.

Add: 1660 South Highway 100, Suite 500 St. Louis Park, MN 55416, USA.

Email: [info@bioworld.com](mailto:info@bioworld.com)

Tel: 6123263284

Fax: 6122933841

### Bioworld technology, co. Ltd.

Add: No 9, weidi road Qixia District Nanjing, 210046, P. R. China.

Email: [info@biogot.com](mailto:info@biogot.com)

Tel: 0086-025-68037686

Fax: 0086-025-68035151