

STX1A polyclonal antibody

Catalog: BS61603

Host: Rabbit

Reactivity: Rat, Mouse

BackGround:

This gene encodes a member of the syntaxin superfamily. Syntaxins are nervous system-specific proteins implicated in the docking of synaptic vesicles with the presynaptic plasma membrane. Syntaxins possess a single C-terminal transmembrane domain, a SNARE

Product:

Rabbit IgG, 1mg/ml in PBS with 0.02% sodium azide, 50% glycerol, pH7.2

Molecular Weight:

~ 29,36 kDa

Swiss-Prot:

Q16623

Purification&Purity:

The antibody was affinity-purified from rabbit antiserum by affinity-chromatography using epitope-specific immunogen and the purity is > 96% (by SDS-PAGE).

Applications:

WB: 1:500~1:1000

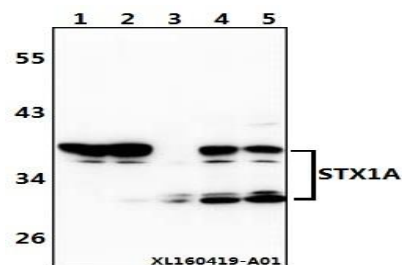
Storage&Stability:

Store at 4 °C short term. Aliquot and store at -20 °C long term. Avoid freeze-thaw cycles.

Specificity:

STX1A polyclonal antibody detects endogenous levels of STX1A protein.

DATA:



Western blot (WB) analysis of STX1A polyclonal antibody at 1:500 dilution

Lane1: The brain tissue lysate of Rat(40ug)

Lane2: The brain tissue lysate of Mouse(40ug)

Lane3: C6 whole cell lysate(40ug)

Lane4: The fetal brain tissue lysate of Rat(40ug)

Lane5: The fetal brain tissue lysate of Mouse(40ug)

Note:

For research use only, not for use in diagnostic procedure.

Bioworld Technology, Inc.

Add: 1660 South Highway 100, Suite 500 St. Louis Park, MN 55416, USA.

Email: info@bioworld.com

Tel: 6123263284

Fax: 6122933841

Bioworld technology, co. Ltd.

Add: No 9, weidi road Qixia District Nanjing, 210046, P. R. China.

Email: info@biogot.com

Tel: 0086-025-68037686

Fax: 0086-025-68035151