

## ADM polyclonal antibody

Catalog: BS61561

Host: Rabbit

Reactivity: Human, Mouse, Rat

### BackGround:

Adrenomedullin (ADM), a vasodilator produced by most contractile cells, is characterized by persistent hypotensive activity. ADM is involved in the regulation of fluid and electrolyte homeostasis and the maintenance of cardiovascular functioning, and in hypertensive patients, the level of ADM in plasma is upregulated. Natriuresis is a common systemic manifestation of aneurysmal subarachnoid hemorrhage. ADM has strong natriuretic actions and ADM-induced natriuresis is caused by an increase in glomerular filtration rate and a decrease in distal tubular sodium reabsorption. ADM is present both in the periphery and brain, and this peptide can exert central effects such as decreasing food ingestion.

### Product:

Rabbit IgG, 1mg/ml in PBS with 0.02% sodium azide, 50% glycerol, pH7.2

### Molecular Weight:

~ 25 kDa

### Swiss-Prot:

P35318

### Purification&Purity:

The antibody was affinity-purified from rabbit antiserum by affinity-chromatography using epitope-specific immunogen and the purity is > 95% (by SDS-PAGE)

### Applications:

WB: 1:500~1:1000

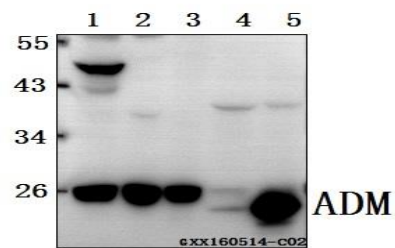
### Storage&Stability:

Store at 4 °C short term. Aliquot and store at -20 °C long term. Avoid freeze-thaw cycles.

### Specificity:

ADM polyclonal antibody detects endogenous levels of ADM protein.

### DATA:



Western blot (WB) analysis of ADM polyclonal antibody at 1:500 dilution

Lane1:HCT116 whole cell lysate(40ug)

Lane2:A549 whole cell lysate(40ug)

Lane3:HEK293T whole cell lysate(40ug)

Lane4:The Kidney lysate of Rat(40ug)

Lane5:The Kidney lysate of Mouse (40ug)

### Note:

For research use only, not for use in diagnostic procedure.

### Bioworld Technology, Inc.

Add: 1660 South Highway 100, Suite 500 St. Louis Park, MN 55416, USA.

Email: [info@bioworld.com](mailto:info@bioworld.com)

Tel: 6123263284

Fax: 6122933841

### Bioworld technology, co. Ltd.

Add: No 9, weidi road Qixia District Nanjing, 210046, P. R. China.

Email: [info@biogot.com](mailto:info@biogot.com)

Tel: 0086-025-68037686

Fax: 0086-025-68035151