

## ANAPC1 polyclonal antibody

Catalog: BS61540

Host: Rabbit

Reactivity: Human, Mouse, Rat

### BackGround:

APC1 is 1 of at least 11 subunits of the anaphase promoting complex (APC), which functions at the metaphase to anaphase transition of the cell cycle and is regulated by spindle checkpoint proteins. The APC is an E3 ubiquitin ligase that targets cell cycle regulatory proteins for degradation by the proteasome, thereby allowing progression through the cell cycle.

### Product:

Rabbit IgG, 1mg/ml in PBS with 0.02% sodium azide, 50% glycerol, pH7.2

### Molecular Weight:

~ 216 kDa

### Swiss-Prot:

Q9H1A4

### Purification&Purity:

The antibody was affinity-purified from rabbit antiserum by affinity-chromatography using epitope-specific immunogen and the purity is > 96% (by SDS-PAGE).

### Applications:

WB: 1:500~1:1000

### Storage&Stability:

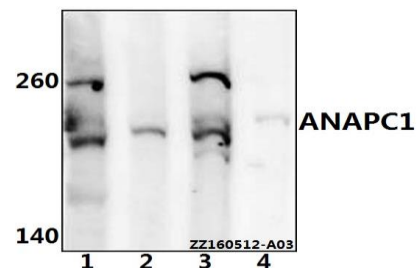
Store at 4 °C short term. Aliquot and store at -20 °C long

term. Avoid freeze-thaw cycles.

### Specificity:

ANAPC1 polyclonal antibody detects endogenous levels of ANAPC1 protein.

### DATA:



Western blot (WB) analysis of ANAPC1 polyclonal antibody at 1:500 dilution

Lane1:A549 whole cell lysate(40ug)

Lane2:HEK293T whole cell lysate(40ug)

Lane3:PC12 whole cell lysate(40ug)

Lane4:AML-12 whole cell lysate(40ug)

### Note:

For research use only, not for use in diagnostic procedure.

### Bioworld Technology, Inc.

Add: 1660 South Highway 100, Suite 500 St. Louis Park, MN 55416, USA.

Email: [info@bioworld.com](mailto:info@bioworld.com)

Tel: 6123263284

Fax: 6122933841

### Bioworld technology, co. Ltd.

Add: No 9, weidi road Qixia District Nanjing, 210046, P. R. China.

Email: [info@biogot.com](mailto:info@biogot.com)

Tel: 0086-025-68037686

Fax: 0086-025-68035151