

## SRD5A1 polyclonal antibody

Catalog: BS61336

Host: Rabbit

Reactivity: Human, Mouse, Rat

### BackGround:

Steroid 5 $\alpha$ -Reductase is an important enzyme in androgen physiology because it catalyzes the conversion of testosterone into the more potent 5 $\alpha$ -dihydro-testosterone, which mediates androgen effects on target tissues. The enzyme exists as two isoforms: type 1, which is expressed mainly in the skin; and type 2, which is expressed mainly in the prostate. In cultured human skin cells, 5 $\alpha$ -Reductase 1 shows heterogeneity of protein, and has different levels of transcriptional and translational expression. 5 $\alpha$ -Reductase 1 is expressed in all portions of the hair follicle, whereas 5 $\alpha$ -Reductase 2 is expressed only in mesenchymal portions. In addition, 5 $\alpha$ -Reductase 1 is mainly expressed in human breast carcinoma and may play a role in the in situ production and actions of the potent androgen 5 $\alpha$ -dihydrotestosterone, including inhibition of cancer cell proliferation in hormone-dependent human breast carcinoma. The 5 $\alpha$ -Reductase-3 $\alpha$ -hydroxysteroid dehydrogenase complex is present in the human brain, suggesting that the complex may be involved in the synthesis of neuroactive steroids or the catabolism of neurotoxic steroids.

### Product:

Rabbit IgG, 1mg/ml in PBS with 0.02% sodium azide, 50% glycerol, pH7.2

### Molecular Weight:

~ 29 kDa

### Swiss-Prot:

P18405

### Purification&Purity:

The antibody was affinity-purified from rabbit antiserum by affinity-chromatography using epitope-specific immunogen and the purity is > 95% (by SDS-PAGE).

### Applications:

WB: 1:500~1:1000

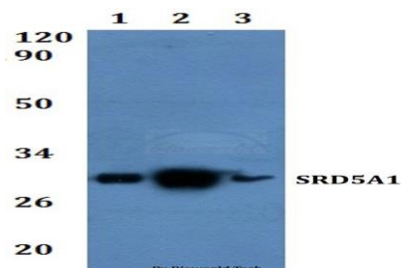
### Storage&Stability:

Store at 4 °C short term. Aliquot and store at -20 °C long term. Avoid freeze-thaw cycles.

### Specificity:

SRD5A1 polyclonal antibody detects endogenous levels of SRD5A1 protein.

### DATA:



Western blot (WB) analysis of SRD5A1 polyclonal antibody at 1:500 dilution

Line1:HEK293T whole cell lysate

Line2:H9C2 whole cell lysate

Line3:Raw264.7 whole cell lysate

### Note:

For research use only, not for use in diagnostic procedure.

### Bioworld Technology, Inc.

Add: 1660 South Highway 100, Suite 500 St. Louis Park, MN 55416, USA.

Email: [info@bioworld.com](mailto:info@bioworld.com)

Tel: 6123263284

Fax: 6122933841

### Bioworld technology, co. Ltd.

Add: No 9, weidi road Qixia District Nanjing, 210046, P. R. China.

Email: [info@biogot.com](mailto:info@biogot.com)

Tel: 0086-025-68037686

Fax: 0086-025-68035151