

## RDM1 polyclonal antibody

Catalog: BS61252

Host: Rabbit

Reactivity: Human, Mouse, Rat

### BackGround:

RDM1 (RAD52motif-containing protein 1) is a 284 amino acid protein that is expressed in testis. RDM1 is involved in the cellular response to cisplatin, a drug commonly used in chemotherapy. Human RDM1 shares 71.1% and 51.2% amino acid identity with mouse and chicken RDM1, respectively. RDM1 exists as 11 alternatively spliced isoforms and only exon 3 is common to all variants. Usage of two translational start sites, one in exon 1 and the other in intron 1, produces RDM1 isoforms with either long or short N termini, and RDM1 isoforms have great diversity in their C termini as well. The RDM1 protein contains two motifs: a motif found in Rad52, a protein that functions in DNA double-strand breaks and homologous recombination, and an RNA recognition motif (RRM) that is not found in Rad52. The RDM1 gene contains seven coding exons, is conserved in chimpanzee, canine, bovine, mouse, rat, chicken and zebrafish, and maps to human chromosome 17q12.

### Product:

Rabbit IgG, 1mg/ml in PBS with 0.02% sodium azide, 50% glycerol, pH7.2

### Molecular Weight:

~ 15 kDa

### Swiss-Prot:

Q8NG50

### Purification&Purity:

The antibody was affinity-purified from rabbit antiserum by affinity-chromatography using epitope-specific im-

munogen and the purity is > 95% (by SDS-PAGE).

### Applications:

WB: 1:500~1:1000

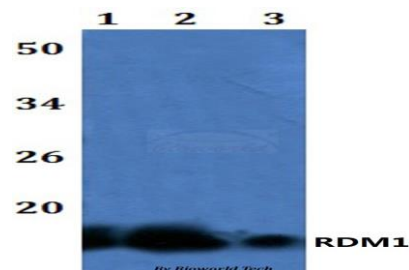
### Storage&Stability:

Store at 4 °C short term. Aliquot and store at -20 °C long term. Avoid freeze-thaw cycles.

### Specificity:

RDM1 polyclonal antibody detects endogenous levels of RDM1 protein.

### DATA:



Western blot (WB) analysis of RDM1 polyclonal antibody at 1:500 dilution

Lane1: HEK293T whole cell lysate

Lane2: Raw264.7 whole cell lysate

Lane3: H9C2 whole cell lysate

### Note:

For research use only, not for use in diagnostic procedure.

### Bioworld Technology, Inc.

Add: 1660 South Highway 100, Suite 500 St. Louis Park, MN 55416, USA.

Email: [info@bioworld.com](mailto:info@bioworld.com)

Tel: 6123263284

Fax: 6122933841

### Bioworld technology, co. Ltd.

Add: No 9, weidi road Qixia District Nanjing, 210046, P. R. China.

Email: [info@biogot.com](mailto:info@biogot.com)

Tel: 0086-025-68037686

Fax: 0086-025-68035151