

RAB11FIP1 polyclonal antibody

Catalog: BS61249

Host: Rabbit

Reactivity: Human, Mouse, Rat

BackGround:

Rab11-FIP1 (Rab 11 family-interacting protein 1), also known as Rab-coupling protein (RCP), is a 1283 amino acid Rab 11 effector protein. Rab11-FIP1, by interacting with Rab GTPases, is involved in the endosomal recycling process and may play a role in controlling membrane trafficking along the phagocytic pathway and during phagocytosis. Localized to the recycling endosome, the cytoplasmic membrane and phagosome membranes, Rab11-FIP1 is expressed as five isoforms produced by alternative splicing. As the most highly expressed isoform, isoform two of Rab11-FIP1 is expressed in brain, lung, testis, small intestine, spleen and heart. Isoform two of Rab11-FIP1 also has been found to form a homooligomer and is believed to interact with many Rab GTPases, including Rab 4A, Rab 11A, Rab 11B and Rab 25.

Product:

Rabbit IgG, 1mg/ml in PBS with 0.02% sodium azide, 50% glycerol, pH7.2

Molecular Weight:

~ 65 kDa

Swiss-Prot:

Q6WKZ4

Purification&Purity:

The antibody was affinity-purified from rabbit antiserum by affinity-chromatography using epitope-specific immunogen and the purity is > 95% (by SDS-PAGE).

Applications:

WB: 1:500~1:1000

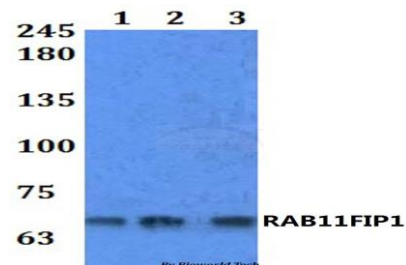
Storage&Stability:

Store at 4 °C short term. Aliquot and store at -20 °C long term. Avoid freeze-thaw cycles.

Specificity:

RAB11FIP1 polyclonal antibody detects endogenous levels of RAB11FIP1 protein.

DATA:



Western blot (WB) analysis of RAB11FIP1 polyclonal antibody at 1:500 dilution

Lane1:HEK293T whole cell lysate

Lane2:Raw264.7 whole cell lysate

Lane3:H9C2 whole cell lysate

Note:

For research use only, not for use in diagnostic procedure.

Bioworld Technology, Inc.

Add: 1660 South Highway 100, Suite 500 St. Louis Park, MN 55416, USA.

Email: info@bioworld.com

Tel: 6123263284

Fax: 6122933841

Bioworld technology, co. Ltd.

Add: No 9, weidi road Qixia District Nanjing, 210046, P. R. China.

Email: info@biogot.com

Tel: 0086-025-68037686

Fax: 0086-025-68035151