

## PPP3CA polyclonal antibody

Catalog: BS6114

Host: Rabbit

Reactivity: Human, Mouse, Rat

**BackGround:**

Calcium-dependent, calmodulin-stimulated protein phosphatase. This subunit may have a role in the calmodulin activation of calcineurin. Dephosphorylates DNM1L, HSPB1 and SSH1.

**Product:**

Rabbit IgG, 1mg/ml in PBS with 0.02% sodium azide, 50% glycerol, pH7.2

**Molecular Weight:**

~ 60 kDa

**Swiss-Prot:**

Q08209

**Purification&Purity:**

The antibody was affinity-purified from rabbit antiserum by affinity-chromatography using epitope-specific immunogen and the purity is > 95% (by SDS-PAGE).

**Applications:**

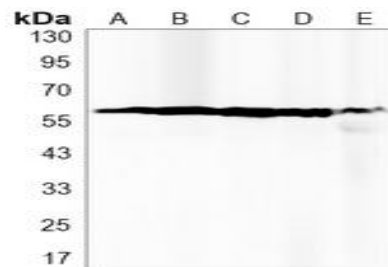
WB: 1:500~1:1000

**Storage&Stability:**

Store at 4 °C short term. Aliquot and store at -20 °C long term. Avoid freeze-thaw cycles.

**Specificity:**

PPP3CA polyclonal antibody detects endogenous levels of PPP3CA protein.

**DATA:**

Western blot (WB) analysis of PPP3CA polyclonal antibody at 1:500 dilution

LaneA:Hela whole cell lysate(40ug)

LaneB:A549 whole cell lysate(40ug)

LaneC:U2OS whole cell lysate(40ug)

LaneD:The Brain tissue lysate of Rat(40ug)

LaneE:The Lung tissue lysate of Mouse(40ug)

**Note:**

For research use only, not for use in diagnostic procedure.

**Bioworld Technology, Inc.**

Add: 1660 South Highway 100, Suite 500 St. Louis Park, MN 55416, USA.

Email: [info@bioworld.com](mailto:info@bioworld.com)

Tel: 6123263284

Fax: 6122933841

**Bioworld technology, co. Ltd.**

Add: No 9, weidi road Qixia District Nanjing, 210046, P. R. China.

Email: [info@biogot.com](mailto:info@biogot.com)

Tel: 0086-025-68037686

Fax: 0086-025-68035151