

SDCCAG8 polyclonal antibody

Catalog: BS61055

Host: Rabbit

Reactivity: Human, Mouse, Rat

Background:

SDCCAG8 (serologically defined colon cancer antigen 8), also known as CCCAP (centrosomal colon cancer autoantigen protein), HSPC085 or NY-CO-8, is a 713 amino acid cytoplasmic protein that is expressed in thymus, prostate, testis, ovary, small intestine, colon, mucosa and renal cancer tumors. Existing as a homodimer, SDCCAG8 localizes to centrioles and interacts with oral-facial-digital syndrome 1 (ODF1), which is associated with nephronophthisis-related ciliopathies (NPHP-RC), a recessive disorder that is characterized by dysplasia or degeneration of the kidney, retina and cerebellum. SDCCAG8 exists as four alternatively spliced isoforms and is encoded by a gene located on human chromosome 1, which spans 260 million base pairs, contains over 3,000 genes and comprises nearly 8% of the human genome.

Product:

Rabbit IgG, 1mg/ml in PBS with 0.02% sodium azide, 50% glycerol, pH7.2

Molecular Weight:

~ 41 kDa

Swiss-Prot:

Q86SQ7

Purification&Purity:

The antibody was affinity-purified from rabbit antiserum

by affinity-chromatography using epitope-specific immunogen and the purity is > 95% (by SDS-PAGE).

Applications:

WB: 1:500~1:1000

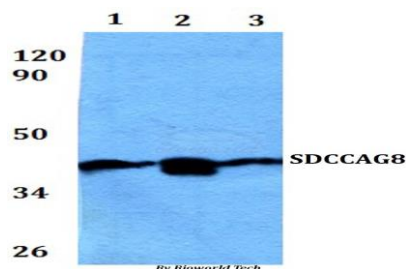
Storage&Stability:

Store at 4 °C short term. Aliquot and store at -20 °C long term. Avoid freeze-thaw cycles.

Specificity:

SDCCAG8 polyclonal antibody detects endogenous levels of SDCCAG8 protein.

DATA:



Western blot (WB) analysis of SDCCAG8 polyclonal antibody at 1:500

dilution Lane1:HEK293T whole cell lysate

Lane2:RAW264.7 whole cell lysate Lane3:H9C2 whole cell lysate

Note:

For research use only, not for use in diagnostic procedure.

Bioworld Technology, Inc.

Add: 1660 South Highway 100, Suite 500 St. Louis Park, MN 55416, USA.

Email: info@bioworld.com

Tel: 6123263284

Fax: 6122933841

Bioworld technology, co. Ltd.

Add: No 9, weidi road Qixia District Nanjing, 210046, P. R. China.

Email: info@biogot.com

Tel: 0086-025-68037686

Fax: 0086-025-68035151