

ANO1 polyclonal antibody

Catalog: BS61052

Host: Rabbit

Reactivity: Human, Mouse, Rat

BackGround:

TMEM16A, also known as DOG1, ORAOV2, TAOS2 or ANO1 (anoctamin 1), is a 986 amino acid multi-pass membrane protein that localizes to both the cell membrane and the cytoplasm and belongs to the anoctamin family. Expressed in a variety of tissues with highest expression in skeletal muscle and liver, TMEM16A functions as a calcium-activated chloride channel that is required for normal tracheal development. Human TMEM16A shares 90% sequence identity with its mouse counterpart, suggesting a conserved role between species. TMEM16A is present in breast, pancreatic, gastric, and uterine cancers, as well as in neck, ovarian and parathyroid tumors, suggesting a role for TMEM16A in carcinogenesis. Three isoforms of TMEM16A exist due to alternative splicing events.

Product:

Rabbit IgG, 1mg/ml in PBS with 0.02% sodium azide, 50% glycerol, pH7.2

Molecular Weight:

~ 74 kDa

Swiss-Prot:

Q5XXA6

Purification&Purity:

The antibody was affinity-purified from rabbit antiserum by affinity-chromatography using epitope-specific immunogen and the purity is > 95% (by SDS-PAGE).

Applications:

WB: 1:500~1:1000

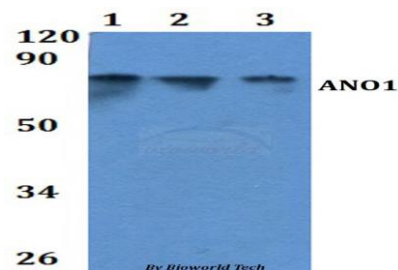
Storage&Stability:

Store at 4 °C short term. Aliquot and store at -20 °C long term. Avoid freeze-thaw cycles.

Specificity:

ANO1 polyclonal antibody detects endogenous levels of ANO1 protein.

DATA:



Western blot (WB) analysis of ANO1 polyclonal antibody at 1:500

Line1:HEK293T whole cell lysate

Line2:Hela whole cell lysate

Line3:H9C2 whole cell lysate

Line4:

Note:

For research use only, not for use in diagnostic procedure.

Bioworld Technology, Inc.

Add: 1660 South Highway 100, Suite 500 St. Louis Park, MN 55416, USA.

Email: info@bioworld.com

Tel: 6123263284

Fax: 6122933841

Bioworld technology, co. Ltd.

Add: No 9, weidi road Qixia District Nanjing, 210046, P. R. China.

Email: info@biogot.com

Tel: 0086-025-68037686

Fax: 0086-025-68035151