

## ALPP polyclonal antibody

Catalog: BS60863

Host: Rabbit

Reactivity: Human, Mouse

### BackGround:

Alkaline phosphatases (AP) are glycosyl-phosphatidylinositol (GPI)-anchored, dimeric, Zn<sup>2+</sup>-metallated glycoproteins that catalyze the hydrolysis of phosphomonoesters into an inorganic phosphate and an alcohol. Placental alkaline phosphatase (also known as PLAP, ALPP, PALP, placental ALP-1 or Regan isozyme) is a 530 amino acid, tissue-specific AP that is expressed in the placenta, the serum of pregnant women and ectopically expressed in various cancers, including those of the ovary and testis. PLAP may assist in guiding migratory cells and transporting specific molecules, such as fatty acids and immunoglobulins, across the plasma membrane. The three tissue-specific APs identified in human, PLAP, germ cell AP (GCAP) and intestinal AP, are 90-98% homologous and their genes are clustered on chromosome 2q.

### Product:

Rabbit IgG, 1mg/ml in PBS with 0.02% sodium azide, 50% glycerol, pH7.2

### Molecular Weight:

~ 76 kDa

### Swiss-Prot:

P05187/P10696

### Purification&Purity:

The antibody was affinity-purified from rabbit antiserum by affinity-chromatography using epitope-specific im-

munogen and the purity is > 95% (by SDS-PAGE).

### Applications:

WB: 1:500~1:1000

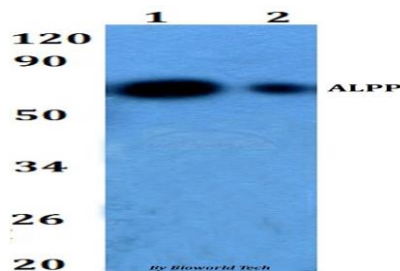
### Storage&Stability:

Store at 4 °C short term. Aliquot and store at -20 °C long term. Avoid freeze-thaw cycles.

### Specificity:

ALPP polyclonal antibody detects endogenous levels of ALPP protein, and also detects ALPP2 protein.

### DATA:



Western blot (WB) analysis of ALPP polyclonal antibody at 1:500 dilution

Lane1:HEK293T whole cell lysate

Lane2:Raw264.7 whole cell lysate

### Note:

For research use only, not for use in diagnostic procedure.

### Bioworld Technology, Inc.

Add: 1660 South Highway 100, Suite 500 St. Louis Park, MN 55416, USA.

Email: [info@bioworld.com](mailto:info@bioworld.com)

Tel: 6123263284

Fax: 6122933841

### Bioworld technology, co. Ltd.

Add: No 9, weidi road Qixia District Nanjing, 210046, P. R. China.

Email: [info@biogot.com](mailto:info@biogot.com)

Tel: 0086-025-68037686

Fax: 0086-025-68035151