

## ACER2 polyclonal antibody

Catalog: BS60828

Host: Rabbit

Reactivity: Human,Rat

### BackGround:

Hydrolyzes the sphingolipid ceramide into sphingosine and free fatty acid. Unsaturated long-chain ceramides are the best substrates, saturated long-chain ceramides and unsaturated very long-chain ceramides are good substrates, whereas saturated very long-chain ceramides and short-chain ceramides were poor substrates. Inhibits the maturation of protein glycosylation in the Golgi complex, including that of integrin beta-1 (ITGB1) and of LAMP1, by increasing the levels of sphingosine. Inhibits cell adhesion by reducing the level of ITGB1 in the cell surface. May have a role in cell proliferation and apoptosis that seems to depend on the balance between sphingosine and sphingosine-1-phosphate.

### Product:

Rabbit IgG, 1mg/ml in PBS with 0.02% sodium azide, 50% glycerol, pH7.2

### Molecular Weight:

~ 31 kDa

### Swiss-Prot:

Q5QJU3

### Purification&Purity:

The antibody was affinity-purified from rabbit antiserum by affinity-chromatography using epitope-specific immunogen and the purity is > 95% (by SDS-PAGE).

### Applications:

WB: 1:500~1:1000

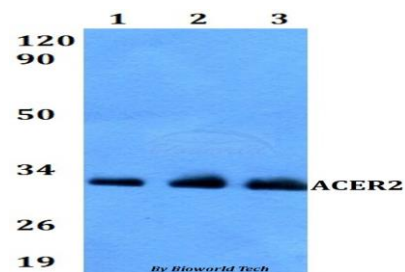
### Storage&Stability:

Store at 4 °C short term. Aliquot and store at -20 °C long term. Avoid freeze-thaw cycles.

### Specificity:

ACER2 polyclonal antibody detects endogenous levels of ACER2 protein.

### DATA:



Western blot (WB) analysis of ACER2 polyclonal antibody at 1:500 dilution

Lane1:A549 whole cell lysate

Lane2:MCF-7 whole cell lysate

Lane3:PC12 whole cell lysate

### Note:

For research use only, not for use in diagnostic procedure.

### Bioworld Technology, Inc.

Add: 1660 South Highway 100, Suite 500 St. Louis Park, MN 55416, USA.

Email: [info@bioworld.com](mailto:info@bioworld.com)

Tel: 6123263284

Fax: 6122933841

### Bioworld technology, co. Ltd.

Add: No 9, weidi road Qixia District Nanjing, 210046, P. R. China.

Email: [info@biogol.com](mailto:info@biogol.com)

Tel: 0086-025-68037686

Fax: 0086-025-68035151