

PTPN21 polyclonal antibody

Catalog: BS60767

Host: Rabbit

Reactivity: Human, Mouse, Rat

Background:

The protein tyrosine phosphatase (PTP) family of proteins are signaling molecules that regulate processes such as cell growth, cell differentiation, oncogenic transformation and the mitotic cycle. PTPN21 (protein tyrosine phosphatase, non-receptor type 21), also known as PTPD1 or PTPRL10, is a 1,174 amino acid member of the PTP family and localizes to both the cytoplasm and the cytoskeleton. Containing one FERM domain and one tyrosine-protein phosphatase domain, PTPN21 functions to catalyze the water-dependent conversion of a protein tyrosine phosphate into a protein tyrosine and a free phosphate and, via this catalytic activity, may be involved in liver regeneration and spermatogenesis. The gene encoding PTPN21 maps to human chromosome 14, which houses over 700 genes and comprises nearly 3.5% of the human genome.

Product:

Rabbit IgG, 1mg/ml in PBS with 0.02% sodium azide, 50% glycerol, pH7.2

Molecular Weight:

~ 133 kDa

Swiss-Prot:

Q16825

Purification&Purity:

The antibody was affinity-purified from rabbit antiserum by affinity-chromatography using epitope-specific immunogen and the purity is > 95% (by SDS-PAGE).

Applications:

WB: 1:500~1:1000

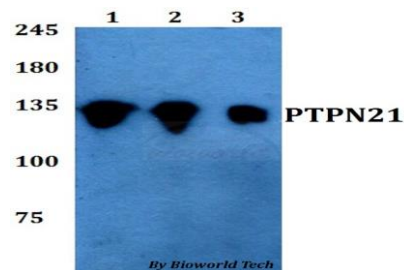
Storage&Stability:

Store at 4 °C short term. Aliquot and store at -20 °C long term. Avoid freeze-thaw cycles.

Specificity:

PTPN21 polyclonal antibody detects endogenous levels of PTPN21 protein.

DATA:



Western blot (WB) analysis of PTPN21 polyclonal antibody at 1:500 dilution

Lane1:A549 whole cell lysate

Lane2:Raw264.7 whole cell lysate

Lane3:PC12 whole cell lysate

Note:

For research use only, not for use in diagnostic procedure.

Bioworld Technology, Inc.

Add: 1660 South Highway 100, Suite 500 St. Louis Park, MN 55416, USA.

Email: info@bioworld.com

Tel: 6123263284

Fax: 6122933841

Bioworld technology, co. Ltd.

Add: No 9, weidi road Qixia District Nanjing, 210046, P. R. China.

Email: info@biogot.com

Tel: 0086-025-68037686

Fax: 0086-025-68035151