

ANXA5 polyclonal antibody

Catalog: BS60587

Host: Rabbit

Reactivity: Human, Mouse, Rat

Background:

The annexin family of calcium-binding proteins is composed of at least ten mammalian genes and is characterized by a conserved core domain, which binds phospholipids in a Ca²⁺-dependent manner, and a unique amino-terminal region, which may confer binding specificity. Annexin family members have been implicated as regulators of such diverse processes as ion flux, endocytosis and exocytosis, and cellular adhesion. For example, the crystal structure of Annexin III has suggested a hydrophilic amino-terminus with possible Ca²⁺ channel activity. Similarly, Annexin V has ion channel properties. Annexin IV, also referred to as endonexin, functions to regulate Cl⁻ flux by mediating calmodulin kinase II (CaMKII) activity and Annexin V has been shown to regulate PKC activity. Annexin V is ubiquitously expressed at high levels in tissues and cells grown in tissue culture, while Annexin VIII exhibits a more limited distribution. Where co-expressed in the same tissues, Annexin VIII is often expressed at a 100-fold lower level than Annexin V. However, Annexin VIII is preferentially expressed in acute promyelocytic leukemia (APL) cells, which may relate to its role in hematopoietic cell differentiation.

Product:

Rabbit IgG, 1mg/ml in PBS with 0.02% sodium azide, 50% glycerol, pH7.2

Molecular Weight:

~ 36 kDa

Swiss-Prot:

P08758

Purification&Purity:

The antibody was affinity-purified from rabbit antiserum by affinity-chromatography using epitope-specific immunogen and the purity is > 95% (by SDS-PAGE).

Applications:

WB: 1:500~1:1000

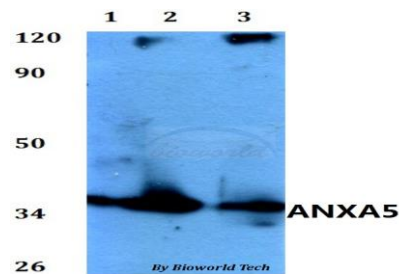
Storage&Stability:

Store at 4 °C short term. Aliquot and store at -20 °C long term. Avoid freeze-thaw cycles.

Specificity:

ANXA5 polyclonal antibody detects endogenous levels of ANXA5 protein.

DATA:



Western blot (WB) analysis of ANXA5 polyclonal antibody at 1:500 dilution

Lane1:HEK293T whole cell lysate

Lane2:Raw264.7 whole cell lysate

Lane3:PC12 whole cell lysate

Note:

For research use only, not for use in diagnostic procedure.

Bioworld Technology, Inc.

Add: 1660 South Highway 100, Suite 500 St. Louis Park, MN 55416, USA.

Email: info@bioworld.com

Tel: 6123263284

Fax: 6122933841

Bioworld technology, co. Ltd.

Add: No 9, weidi road Qixia District Nanjing, 210046, P. R. China.

Email: info@biogot.com

Tel: 0086-025-68037686

Fax: 0086-025-68035151