

## RNASE4 polyclonal antibody

Catalog: BS60511

Host: Rabbit

Reactivity: Human, Mouse, Rat

### BackGround:

RNase 4 and RNase 5/ang 1 are unique among the RNase A ribonuclease genes in that they maintain a complex gene locus that is conserved across species with transcription initiated from tissue-specific dual promoters followed by differential exon splicing. Rnase4 (ribonuclease, RNase A family 4) gene can produce 2 transcripts both encoding 148 amino acid proteins. Rnase 4 is a member of the pancreatic-type of secretory ribonucleases, a subset of the ribonuclease A superfamily. RNase 4 prefers poly(C) as a substrate and hydrolyzes 2',3'-cyclic nucleotides, with a pH optimum near 8.0. mRNA encoding RNase 4 is detectable in human pancreas, lung, skeletal muscle, heart, kidney and placenta; liver represents the most abundant source.

### Product:

Rabbit IgG, 1mg/ml in PBS with 0.02% sodium azide, 50% glycerol, pH7.2

### Molecular Weight:

~ 17 kDa

### Swiss-Prot:

P34096

### Purification&Purity:

The antibody was affinity-purified from rabbit antiserum by affinity-chromatography using epitope-specific immunogen and the purity is > 95% (by SDS-PAGE).

### Applications:

WB: 1:500~1:1000

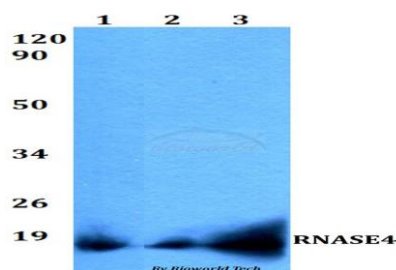
### Storage&Stability:

Store at 4 °C short term. Aliquot and store at -20 °C long term. Avoid freeze-thaw cycles.

### Specificity:

RNASE4 polyclonal antibody detects endogenous levels of RNASE4 protein.

### DATA:



Western blot (WB) analysis of RNASE4 polyclonal antibody at 1:500 dilution

Lane1:HEK293T whole cell lysate

Lane2:sp2/0 whole cell lysate

Lane3:PC12 whole cell lysate

### Note:

For research use only, not for use in diagnostic procedure.

### Bioworld Technology, Inc.

Add: 1660 South Highway 100, Suite 500 St. Louis Park, MN 55416, USA.

Email: [info@bioworld.com](mailto:info@bioworld.com)

Tel: 6123263284

Fax: 6122933841

### Bioworld technology, co. Ltd.

Add: No 9, weidi road Qixia District Nanjing, 210046, P. R. China.

Email: [info@biogot.com](mailto:info@biogot.com)

Tel: 0086-025-68037686

Fax: 0086-025-68035151