

## RPL22/RPL22L1 polyclonal antibody

Catalog: BS60502

Host: Rabbit

Reactivity: Human,Rat

### BackGround:

Ribosomal Protein L22 is also known as heparin-binding protein HBp15, because it binds heparin in the submandibular gland and brain. This small protein is also associated with two small nuclear RNAs called EBERs (Epstein-Barr encoded RNAs). These RNAs are synthesized in large amounts by human B lymphocytes infected with Epstein-Barr virus (EBV). Ribosomal protein L22, like L4, contains a globular domain that sits on the surface of the large ribosomal subunit and an extended loop that penetrates its core. These extensions contact multiple domains of 23S rRNA, indicating a potential, but not essential, role in rRNA folding during ribosomal assembly.

### Product:

Rabbit IgG, 1mg/ml in PBS with 0.02% sodium azide, 50% glycerol, pH7.2

### Molecular Weight:

~ 15 kDa

### Swiss-Prot:

Q6P5R6/P35268

### Purification&Purity:

The antibody was affinity-purified from rabbit antiserum by affinity-chromatography using epitope-specific immunogen and the purity is > 95% (by SDS-PAGE).

### Applications:

WB: 1:500~1:1000

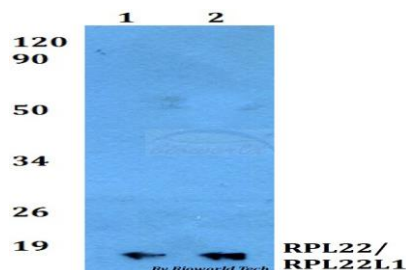
### Storage&Stability:

Store at 4 °C short term. Aliquot and store at -20 °C long term. Avoid freeze-thaw cycles.

### Specificity:

RPL22/RPL22L1 polyclonal antibody detects endogenous levels of RPL22/RPL22L1 protein.

### DATA:



Western blot (WB) analysis of RPL22/ RPL22L1 polyclonal antibody at 1:500 dilution

Lane1:MCF-7 whole cell lysate

Lane2:PC12 whole cell lysate

### Note:

For research use only, not for use in diagnostic procedure.

### Bioworld Technology, Inc.

Add: 1660 South Highway 100, Suite 500 St. Louis Park, MN 55416, USA.

Email: [info@bioworld.com](mailto:info@bioworld.com)

Tel: 6123263284

Fax: 6122933841

### Bioworld technology, co. Ltd.

Add: No 9, weidi road Qixia District Nanjing, 210046, P. R. China.

Email: [info@biogot.com](mailto:info@biogot.com)

Tel: 0086-025-68037686

Fax: 0086-025-68035151