

SNAI2 polyclonal antibody

Catalog: BS60447

Host: Rabbit

Reactivity: Human, Mouse, Rat

BackGround:

The SNAIL family of developmental regulatory proteins is a group of widely conserved zinc-finger proteins that regulate transcription and include the mammalian proteins SLUG, SNAI 1 (the human homolog of Drosophila SNAIL) and Smuc. SNAI 1 and SLUG are expressed in placenta and in adult heart, liver, and skeletal muscle. SNAI 1, and the corresponding mouse homolog Sna, each contain three classic zinc fingers and one atypical zinc finger, while SLUG contains five zinc finger regions and a transcriptional repression domain at the amino terminus, which enables SLUG to act as a negative regulator of gene expression. SLUG is implicated in the generation and migration of neural crest cells in human embryos and also contributes to limb bud development. In addition, SLUG also constitutes a cellular anti-apoptotic transcription factor that effectively prevents apoptosis in murine pro-B cells deprived of IL-3. The SNAIL-related gene from murine skeletal muscle cells, Smuc, is highly expressed in skeletal muscle and thymus and can, likewise, repress gene transcription. Smuc preferentially associates with CAGGTG and CACCTG E-box motifs (CANNTG) on DNA and involves the five putative DNA-binding zinc finger domains at the C-terminal region of Smuc.

Product:

Rabbit IgG, 1mg/ml in PBS with 0.02% sodium azide, 50% glycerol, pH7.2

Molecular Weight:

~ 30 kDa

Swiss-Prot:

O43623

Purification&Purity:

The antibody was affinity-purified from rabbit antiserum by affinity-chromatography using epitope-specific immunogen and the purity is > 95% (by SDS-PAGE).

Applications:

WB: 1:500~1:1000

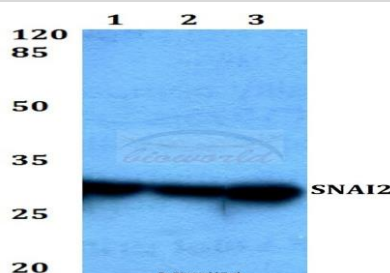
Storage&Stability:

Store at 4 °C short term. Aliquot and store at -20 °C long term. Avoid freeze-thaw cycles.

Specificity:

SNAI2 polyclonal antibody detects endogenous levels of SNAI2 protein.

DATA:



Western blot (WB) analysis of SNAI2 polyclonal antibody at 1:500 dilution

Lane1:HEK293T whole cell lysate

Lane2:NIH-3T3 whole cell lysate

Lane3:PC12 whole cell lysate

Note:

For research use only, not for use in diagnostic procedure.

Bioworld Technology, Inc.

Add: 1660 South Highway 100, Suite 500 St. Louis Park, MN 55416, USA.

Email: info@bioworld.com

Tel: 6123263284

Fax: 6122933841

Bioworld technology, co. Ltd.

Add: No 9, weidi road Qixia District Nanjing, 210046, P. R. China.

Email: info@biogot.com

Tel: 0086-025-68037686

Fax: 0086-025-68035151