

## SCRIB polyclonal antibody

Catalog: BS60418

Host: Rabbit

Reactivity: Human

### BackGround:

*Drosophila melanogaster* genes, which are categorized based on the type of protein for which they encode, represent six major classifications, including intracellular signaling proteins, transmembrane proteins, RNA binding proteins, secreted factors, transcription regulators (basic helix-loop-helix, homeodomain containing, zinc finger containing and chromatin associated) and other functional proteins. Morphogenesis and cell differentiation in *Drosophila* requires accurate control of cell division. Discs large (DLG), Scribble (Scrib) and Lethal giant larvae (LGL) tumor suppressor proteins regulate multiple aspects of neuroblast asymmetric cell division. DLG/Scrib/LGL proteins show apical cortical enrichment at prophase/metaphase and have a uniform cortical distribution. Mutations in the genes encoding multi-PDZ (PSD-95, discs-large and ZO-1) and the leucine-rich-repeat protein Scrib cause aberrant cell shapes and the loss of monolayer organization of embryonic epithelia. The human homolog, hScrib, is intracellularly localized to the vertebrate tight junction, which functions to correctly place adherens junctions. The PDZ domains of Scrib are predicted to bind to the consensus S/TXV at the C-terminus of proteins. PDZ domain proteins have been implicated at several different sites of the protein trafficking pathway, suggesting that Scrib is required for the localization of several epithelial determinants.

### Product:

Rabbit IgG, 1mg/ml in PBS with 0.02% sodium azide, 50% glycerol, pH7.2

### Molecular Weight:

~ 240 kDa

### Swiss-Prot:

Q14160

### Purification&Purity:

The antibody was affinity-purified from rabbit antiserum by affinity-chromatography using epitope-specific immunogen and the purity is > 95% (by SDS-PAGE).

### Applications:

WB: 1:500~1:1000

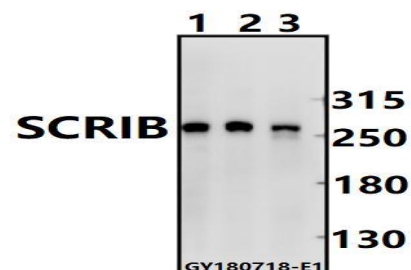
### Storage&Stability:

Store at 4 °C short term. Aliquot and store at -20 °C long term. Avoid freeze-thaw cycles.

### Specificity:

SCRIB polyclonal antibody detects endogenous levels of SCRIB protein.

### DATA:



Western blot (WB) analysis of SCRIB polyclonal antibody at 1:500 dilution

Lane1:HEK293T whole cell lysate(40ug)

Lane2:MCF-7 whole cell lysate(40ug)

Lane3:HCT116 whole cell lysate(40ug)

### Note:

For research use only, not for use in diagnostic procedure.

### Bioworld Technology, Inc.

Add: 1660 South Highway 100, Suite 500 St. Louis Park, MN 55416, USA.

Email: [info@bioworld.com](mailto:info@bioworld.com)

Tel: 6123263284

Fax: 6122933841

### Bioworld technology, co. Ltd.

Add: No 9, weidi road Qixia District Nanjing, 210046, P. R. China.

Email: [info@biogot.com](mailto:info@biogot.com)

Tel: 0086-025-68037686

Fax: 0086-025-68035151