

RETN polyclonal antibody

Catalog: BS60407

Host: Rabbit

Reactivity: Human

BackGround:

The cysteine-rich, adipose tissue-specific, secretory factor resistin (resistance to insulin) also known as ADFS, is a secreted hormone that potentially links obesity to diabetes. Resistin is rich in serine and cysteine residues and contains a unique cysteine repeat motif. Resistin and the resistin-like molecules share the characteristic cysteine composition and other signature features. Resistin-like a is a secreted protein that has restricted tissue distribution and is most highly expressed in adipose tissue. Another family member, Resistin-like b, is a secreted protein expressed only in the gastrointestinal tract, particularly in the colon, in both mouse and human. Resistin-like b expression is highest in proliferative epithelial cells and is markedly increased in tumors, suggesting a role in intestinal proliferation.

Product:

Rabbit IgG, 1mg/ml in PBS with 0.02% sodium azide, 50% glycerol, pH7.2

Molecular Weight:

~ 12 kDa

Swiss-Prot:

Q9HD89

Purification&Purity:

The antibody was affinity-purified from rabbit antiserum by affinity-chromatography using epitope-specific im-

munogen and the purity is > 95% (by SDS-PAGE).

Applications:

WB: 1:500~1:1000

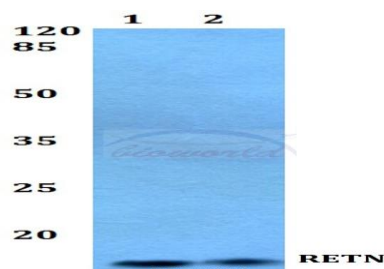
Storage&Stability:

Store at 4 °C short term. Aliquot and store at -20 °C long term. Avoid freeze-thaw cycles.

Specificity:

RETN polyclonal antibody detects endogenous levels of RETN protein.

DATA:



Western blot (WB) analysis of RETN polyclonal antibody at 1:500 dilution

Lane1:A549 whole cell lysate

Lane2:DLD whole cell lysate

Note:

For research use only, not for use in diagnostic procedure.

Bioworld Technology, Inc.

Add: 1660 South Highway 100, Suite 500 St. Louis Park, MN 55416, USA.

Email: info@bioworld.com

Tel: 6123263284

Fax: 6122933841

Bioworld technology, co. Ltd.

Add: No 9, weidi road Qixia District Nanjing, 210046, P. R. China.

Email: info@biogot.com

Tel: 0086-025-68037686

Fax: 0086-025-68035151