

RGMB polyclonal antibody

Catalog: BS60332

Host: Rabbit

Reactivity: Human, Mouse, Rat

BackGround:

The repulsive guidance molecule (RGM) family of proteins are important in the guidance of growth cones of developing neurons. They are repulsive for a group of axons, those from the temporal half of the retina. RGM have been implicated in both axonal guidance and neural tube closure but as opposed to for ephrins, semaphorins, netrins and slits, no receptor mechanism for RGM activation has been defined. Dorsal root ganglion axons do not respond to RGM but neogenin (a netrin-binding protein which can function as an RGM receptor) expression can spur RGM responsiveness. The RGM proteins are attached to the membrane by a GPI-anchor. Two members of this family, RGMa and RGMb, are expressed in the nervous system. RGMc, also known as Hemojuvelin, is a part of the signaling pathway activating hepcidin and works together with hepcidin to restrict iron absorption in the gut. Defects in the gene encoding for RGMc causes the autosomal recessive disorder juvenile hemochromatosis (JH).

Product:

Rabbit IgG, 1mg/ml in PBS with 0.02% sodium azide, 50% glycerol, pH7.2

Molecular Weight:

~ 52 kDa

Swiss-Prot:

Q6NW40

Purification&Purity:

The antibody was affinity-purified from rabbit antiserum by affinity-chromatography using epitope-specific immunogen and the purity is > 95% (by SDS-PAGE).

Applications:

WB: 1:500~1:1000

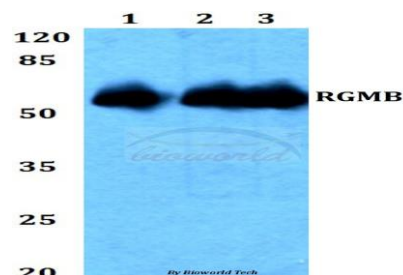
Storage&Stability:

Store at 4 °C short term. Aliquot and store at -20 °C long term. Avoid freeze-thaw cycles.

Specificity:

RGMB polyclonal antibody detects endogenous levels of RGMB protein.

DATA:



Western blot (WB) analysis of RGMB polyclonal antibody at 1:500 dilution

Lane1:HEK293T whole cell lysate

Lane2:NIH-3T3 whole cell lysate

Lane3:H9C2 whole cell lysate

Note:

For research use only, not for use in diagnostic procedure.

Bioworld Technology, Inc.

Add: 1660 South Highway 100, Suite 500 St. Louis Park, MN 55416, USA.

Email: info@bioworld.com

Tel: 6123263284

Fax: 6122933841

Bioworld technology, co. Ltd.

Add: No 9, weidi road Qixia District Nanjing, 210046, P. R. China.

Email: info@biogot.com

Tel: 0086-025-68037686

Fax: 0086-025-68035151