

PI3K p85 β polyclonal antibody

Catalog: BS60314

Host: Rabbit

Reactivity: Human, Mouse, Rat

BackGround:

Phosphatidylinositol 3-kinase (PI 3-kinase) is composed of p85 and p110 subunits. p85 lacks PI 3-kinase activity and acts as an adapter, coupling p110 to activated protein tyrosine kinase. Two forms of p85 have been described (p85 α and p85 β), each possessing one SH3 and two SH2 domains. Various p110 isoforms have been identified. p110 α and p110 β interact with p85 α , and p110 α has also been shown to interact with p85 β in vitro. p110 δ expression is restricted to white blood cells. It has been shown to bind p85 α and p85 β , but it apparently does not phosphorylate these subunits. p110 δ seems to have the capacity to autophosphorylate. p110 γ does not interact with the p85 subunits. It has been shown to be activated by α and $\beta\gamma$ heterotrimeric G proteins.

Product:

Rabbit IgG, 1mg/ml in PBS with 0.02% sodium azide, 50% glycerol, pH7.2

Molecular Weight:

~ 85 kDa

Swiss-Prot:

O00459

Purification&Purity:

The antibody was affinity-purified from rabbit antiserum by affinity-chromatography using epitope-specific immunogen and the purity is > 95% (by SDS-PAGE).

Applications:

WB: 1:500~1:1000

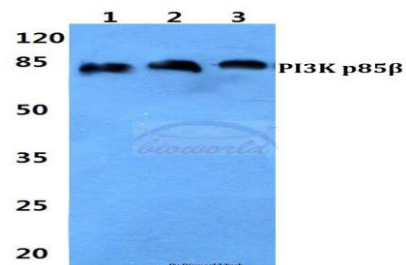
Storage&Stability:

Store at 4 °C short term. Aliquot and store at -20 °C long term. Avoid freeze-thaw cycles.

Specificity:

PI 3-kinase p85 β polyclonal antibody detects endogenous levels of PI 3-kinase p85 β protein.

DATA:



Western blot (WB) analysis of PI3K p85 β polyclonal antibody at 1:500 dilution

Lane1:HEK293T cell lysate

Lane2:Raw264.7 cell lysate

Lane3:H9C2 cell lysate

Note:

For research use only, not for use in diagnostic procedure.

Bioworld Technology, Inc.

Add: 1660 South Highway 100, Suite 500 St. Louis Park, MN 55416, USA.

Email: info@bioworld.com

Tel: 6123263284

Fax: 6122933841

Bioworld technology, co. Ltd.

Add: No 9, weidi road Qixia District Nanjing, 210046, P. R. China.

Email: info@biogot.com

Tel: 0086-025-68037686

Fax: 0086-025-68035151