

## RPAP1 polyclonal antibody

Catalog: BS60238

Host: Rabbit

Reactivity: Human, Mouse, Rat

### BackGround:

RNA polymerases transcribe nuclear genes for ribosomal RNA and are integral components of ribosomal biogenesis. RNA polymerase I (Pol I) is located in the nucleolus and transcribes class I genes, which code for large ribosomal RNA. RNA polymerase II (Pol II) synthesizes mRNA. RNA polymerase III (Pol III) transcribes class III genes, encoding a number of small ribosomal RNA molecules including tRNA and 5S rRNA. RPAP1 (RNA polymerase II associated protein 1) is a 1,393 amino acid nuclear protein that is thought to connect Pol II to acetylated Histone H3 and regulators of protein complex formation. A member of the RPAP1 family, RPAP1 exists as three alternatively spliced isoforms that are encoded by a gene that maps to human chromosome 15q15.1.

### Product:

Rabbit IgG, 1mg/ml in PBS with 0.02% sodium azide, 50% glycerol, pH7.2

### Molecular Weight:

~ 153 kDa

### Swiss-Prot:

Q9BWH6

### Purification&Purity:

The antibody was affinity-purified from rabbit antiserum by affinity-chromatography using epitope-specific immunogen and the purity is > 95% (by SDS-PAGE).

### Applications:

WB: 1:500~1:1000

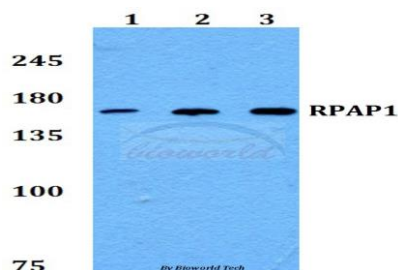
### Storage&Stability:

Store at 4 °C short term. Aliquot and store at -20 °C long term. Avoid freeze-thaw cycles.

### Specificity:

RPAP1 polyclonal antibody detects endogenous levels of RPAP1 protein.

### DATA:



Western blot (WB) analysis of RPAP1 polyclonal antibody at 1:500 dilution

Lane1:HEK293T whole cell lysate

Lane2:NIH-3T3 whole cell lysate

Lane3:H9C2 whole cell lysate

### Note:

For research use only, not for use in diagnostic procedure.

### Bioworld Technology, Inc.

Add: 1660 South Highway 100, Suite 500 St. Louis Park, MN 55416, USA.

Email: [info@bioworld.com](mailto:info@bioworld.com)

Tel: 6123263284

Fax: 6122933841

### Bioworld technology, co. Ltd.

Add: No 9, weidi road Qixia District Nanjing, 210046, P. R. China.

Email: [info@biogot.com](mailto:info@biogot.com)

Tel: 0086-025-68037686

Fax: 0086-025-68035151