

RHOF polyclonal antibody

Catalog: BS60234

Host: Rabbit

Reactivity: Human, Mouse, Rat

BackGround:

Rho, the Ras-related small GTPase, is responsible for the regulation of actin-based cytoskeletal structures including stress fibers, focal adhesions and the contractile ring apparatus. Rho proteins function as molecular switches that are able to turn cytokinesis on and off. Although little is known about signaling downstream of Rho, a host of putative Rho effector proteins have been described. Rho F (ras homolog gene family, member F), also known as RIF or ARHF, is a 211 amino acid membrane protein that localizes to the cytoplasmic side of the plasma membrane. Belonging to the small GTPase superfamily and the Rho family, Rho F functions cooperatively with Cdc42 and Rac to generate additional cytoskeletal structures, such as increasing variation of actin-based morphology. Rho F exists as two alternatively spliced isoforms and is encoded by a gene located on human chromosome 12q24.31.

Product:

Rabbit IgG, 1mg/ml in PBS with 0.02% sodium azide, 50% glycerol, pH7.2

Molecular Weight:

~ 24 kDa

Swiss-Prot:

Q9HBH0

Purification&Purity:

The antibody was affinity-purified from rabbit antiserum by affinity-chromatography using epitope-specific immunogen and the purity is > 95% (by SDS-PAGE).

Applications:

WB: 1:500~1:1000

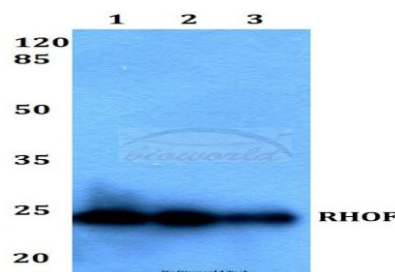
Storage&Stability:

Store at 4 °C short term. Aliquot and store at -20 °C long term. Avoid freeze-thaw cycles.

Specificity:

RHOF polyclonal antibody detects endogenous levels of RHOF protein.

DATA:



Western blot (WB) analysis of RHOF polyclonal antibody at 1:500 dilution

Lane1:HEK293T whole cell lysate

Lane2:Raw264.7 whole cell lysate

Lane3:H9C2 whole cell lysate

Note:

For research use only, not for use in diagnostic procedure.

Bioworld Technology, Inc.

Add: 1660 South Highway 100, Suite 500 St. Louis Park, MN 55416, USA.

Email: info@bioworld.com

Tel: 6123263284

Fax: 6122933841

Bioworld technology, co. Ltd.

Add: No 9, weidi road Qixia District Nanjing, 210046, P. R. China.

Email: info@biogot.com

Tel: 0086-025-68037686

Fax: 0086-025-68035151