

## RALB polyclonal antibody

Catalog: BS60224

Host: Rabbit

Reactivity: Human, Mouse, Rat

### BackGround:

Ral A and Ral B constitute a distinct subfamily of Ras-related GTPases (i.e., GDP/GTP binding proteins). Ral proteins are activated by a unique nucleotide exchange factor, Ral GDS, and deactivated by a distinct GTPase-activating protein. Unlike Ras proteins, Ral A and Ral B fail to induce transformed foci when activated variants are expressed in various recipient cells. A potential downstream target of Ral, designated Ral BP-1, has been shown to contain a Rho-GTPase-activating domain. This Rho-GTPase-activating domain interacts preferentially with the Rho family member Cdc42. A Ras/Ral signaling pathway has been reported to mediate phospholipase D (PLD) activation by v-Src, thus indicating PLD as another downstream target of Ral A.

### Product:

Rabbit IgG, 1mg/ml in PBS with 0.02% sodium azide, 50% glycerol, pH7.2

### Molecular Weight:

~ 25 kDa

### Swiss-Prot:

P11234

### Purification&Purity:

The antibody was affinity-purified from rabbit antiserum by affinity-chromatography using epitope-specific immunogen and the purity is > 95% (by SDS-PAGE).

### Applications:

WB: 1:500~1:1000

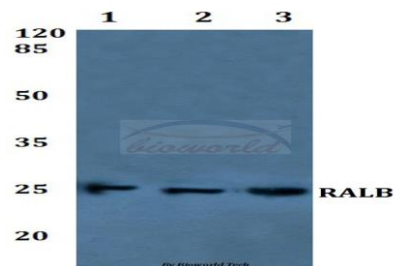
### Storage&Stability:

Store at 4 °C short term. Aliquot and store at -20 °C long term. Avoid freeze-thaw cycles.

### Specificity:

RALB polyclonal antibody detects endogenous levels of RALB protein.

### DATA:



Western blot (WB) analysis of RALB polyclonal antibody at 1:500 dilution

Lane1:A549 whole cell lysate

Lane2:NIH-3T3 whole cell lysate

Lane3:PC12 whole cell lysate

### Note:

For research use only, not for use in diagnostic procedure.

### Bioworld Technology, Inc.

Add: 1660 South Highway 100, Suite 500 St. Louis Park, MN 55416, USA.

Email: [info@bioworld.com](mailto:info@bioworld.com)

Tel: 6123263284

Fax: 6122933841

### Bioworld technology, co. Ltd.

Add: No 9, weidi road Qixia District Nanjing, 210046, P. R. China.

Email: [info@biogot.com](mailto:info@biogot.com)

Tel: 0086-025-68037686

Fax: 0086-025-68035151