

RAPH1 polyclonal antibody

Catalog: BS60216

Host: Rabbit

Reactivity: Human,Rat

BackGround:

Lamellipodin, also called ras-associated and pleckstrin homology domains-containing protein 1 (RAPH1), is a 1302 amino acid member of the MRL family. The peripheral membrane protein mediates localized membrane signals and colocalizes at the tips of filopodia and lamellipodia with ENAH/VASP. Aside from the main isoform, nine additional isoforms have been identified for Lamellipodin (RMO1, RMO1a, RMO1b, RMO1c, RMO1ab, RMO1ac, RMO1bc, RMO1abc and RMO1-RAPH1). RMO1-RAPH1 is expressed in a wide variety of tissues, most highly in brain, heart, ovary and developing embryo. RMO1 is also widely expressed, with highest amounts in liver. Lamellipodin is down regulated in breast and ovarian cancers and shows reduced expression in metastatic osteosarcomas in comparison to primary osteosarcoma tumors.

Product:

Rabbit IgG, 1mg/ml in PBS with 0.02% sodium azide, 50% glycerol, pH7.2

Molecular Weight:

~ 135 kDa

Swiss-Prot:

Q70E73

Purification&Purity:

The antibody was affinity-purified from rabbit antiserum by affinity-chromatography using epitope-specific immunogen and the purity is > 95% (by SDS-PAGE).

Applications:

WB: 1:500~1:1000

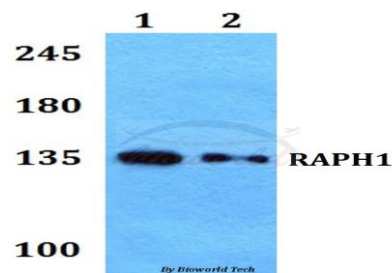
Storage&Stability:

Store at 4 °C short term. Aliquot and store at -20 °C long term. Avoid freeze-thaw cycles.

Specificity:

RAPH1 polyclonal antibody detects endogenous levels of RAPH1 protein.

DATA:



Western blot (WB) analysis of RAPH1 polyclonal antibody at 1:500 dilution

Lane1:HepG2 whole cell lysate

Lane2:H9C2 whole cell lysate

Note:

For research use only, not for use in diagnostic procedure.

Bioworld Technology, Inc.

Add: 1660 South Highway 100, Suite 500 St. Louis Park, MN 55416, USA.

Email: info@bioworld.com

Tel: 6123263284

Fax: 6122933841

Bioworld technology, co. Ltd.

Add: No 9, weidi road Qixia District Nanjing, 210046, P. R. China.

Email: info@biogot.com

Tel: 0086-025-68037686

Fax: 0086-025-68035151