

RECQL4 polyclonal antibody

Catalog: BS60115

Host: Rabbit

Reactivity: Human, Mouse, Rat

BackGround:

In humans, the RecQ helicase family includes WRN, BLM, RecQL1, RecQL4 and RecQL5 proteins, all of which contain a conserved helicase domain. WRN and BLM have been demonstrated to be the responsible genes in Werner and Bloom syndromes, respectively. RecQL1 and RecQL5 also belong to the human RecQ helicase family, but their correlation with genetic disorders, if any, is unknown. The gene encoding human RecQL4, which maps to chromosome 8q24.3, is believed to be the gene responsible for the development of Rothmund-Thomson syndrome (RTS). The levels of WRN, BLM, RecQL1, 4 and 5 are differentially up-regulated to guarantee genomic stability in cells that are transformed or actively proliferating. In humans, RecQL1 and RecQL5 map to chromosome 12p12 and 17q25, respectively.

Product:

Rabbit IgG, 1mg/ml in PBS with 0.02% sodium azide, 50% glycerol, pH7.2

Molecular Weight:

~ 133 kDa

Swiss-Prot:

O94761

Purification&Purity:

The antibody was affinity-purified from rabbit antiserum by affinity-chromatography using epitope-specific immunogen and the purity is > 95% (by SDS-PAGE).

Applications:

WB: 1:500~1:1000

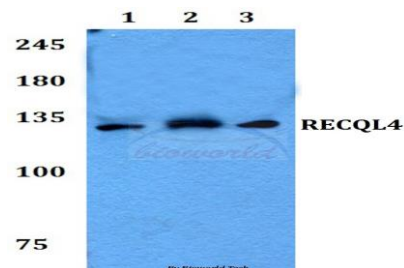
Storage&Stability:

Store at 4 °C short term. Aliquot and store at -20 °C long term. Avoid freeze-thaw cycles.

Specificity:

RECQL4 polyclonal antibody detects endogenous levels of RECQL4 protein.

DATA:



Western blot (WB) analysis of RECQL4 polyclonal antibody at 1:500 dilution

Lane1:Hela whole cell lysate

Lane2:NIH-3T3 whole cell lysate

Lane3:Rat brain tissue lysate

Note:

For research use only, not for use in diagnostic procedure.

Bioworld Technology, Inc.

Add: 1660 South Highway 100, Suite 500 St. Louis Park, MN 55416, USA.

Email: info@bioworld.com

Tel: 6123263284

Fax: 6122933841

Bioworld technology, co. Ltd.

Add: No 9, weidi road Qixia District Nanjing, 210046, P. R. China.

Email: info@biogot.com

Tel: 0086-025-68037686

Fax: 0086-025-68035151