

## ALDH3B2 polyclonal antibody

Catalog: BS60095

Host: Rabbit

Reactivity: Human, Mouse, Rat

### Background:

ALDH3B2 (aldehyde dehydrogenase 3 family, member B2), also known as ALDH8, is a 385 amino acid protein that belongs to the ALDH family and is involved in the pathway of alcohol metabolism. Expressed in salivary gland tissue, ALDH3B2 functions to catalyze the NADP<sup>+</sup>-dependent conversion of an aldehyde into an acid. The gene encoding ALDH3B2 maps to human chromosome 11, which houses over 1,400 genes and comprises nearly 4% of the human genome. Jervell and Lange-Nielsen syndrome, Jacobsen syndrome, Niemann-Pick disease, hereditary angioedema and Smith-Lemli-Opitz syndrome are associated with defects in genes that maps to chromosome 11.

### Product:

Rabbit IgG, 1mg/ml in PBS with 0.02% sodium azide, 50% glycerol, pH7.2

### Molecular Weight:

~ 43 kDa

### Swiss-Prot:

P48448

### Purification&Purity:

The antibody was affinity-purified from rabbit antiserum by affinity-chromatography using epitope-specific immunogen and the purity is > 95% (by SDS-PAGE).

### Applications:

WB: 1:500~1:1000

IHC: 1:50~1:200

### Storage&Stability:

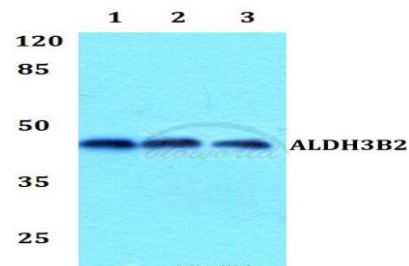
Store at 4 °C short term. Aliquot and store at -20 °C long term. Avoid freeze-thaw cycles.

### Specificity:

ALDH3B2 polyclonal antibody detects endogenous lev-

els of ALDH3B2 protein.

### DATA:

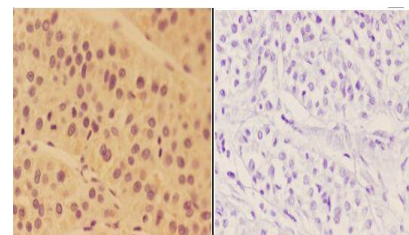


Western blot (WB) analysis of ALDH3B2 polyclonal antibody at 1:500 dilution

Lane1:Hela whole cell lysate

Lane2:Raw264.7 whole cell lysate

Lane3:H9C2 whole cell lysate



BS60095  
Lot CN21141

Immunohistochemistry (IHC) analyzes of ALDH3B2 pAb in paraffin-embedded human liver carcinoma tissue at 1:50, showing cytoplasm and membrane staining. Negative control (the right) Using PBS instead of primary antibody, secondary antibody is Goat Anti-Rabbit IgG-biotin followed by avidin-peroxidase.

### Note:

For research use only, not for use in diagnostic procedure.

### Bioworld Technology, Inc.

Add: 1660 South Highway 100, Suite 500 St. Louis Park, MN 55416, USA.

Email: [info@bioworld.com](mailto:info@bioworld.com)

Tel: 6123263284

Fax: 6122933841

### Bioworld technology, co. Ltd.

Add: No 9, weidi road Qixia District Nanjing, 210046, P. R. China.

Email: [info@biogot.com](mailto:info@biogot.com)

Tel: 0086-025-68037686

Fax: 0086-025-68035151