

ADAM23 polyclonal antibody

Catalog: BS60091

Host: Rabbit

Reactivity: Human, Mouse

BackGround:

ADAMs (a disintegrin and metalloproteinase domain), also known as MDCs (metalloproteinase, disintegrin, and cysteine-rich domain) or cellular disintegrins, are a family of proteins that are expressed in numerous different tissues. They catalyze proteolysis, adhesion, fusion and intracellular signaling. ADAMs are membrane-anchored proteins, and there are over 30 different members in the family with many diverse functions. ADAM 23 is exclusively expressed in fetal and adult brain and may function as an integrin ligand in cells of neural origin. Adhesion of neuroblastoma and astrocytoma cells is promoted by the disintegrin-like domain of ADAM23 and is mediated by an interaction of this protein with $\alpha\beta3$. A short amino acid sequence in the disintegrin loop of ADAM23 interacts with $\alpha\beta3$ to mediate cell interactions that take place during both normal and pathological processes. The three characteristic histidine residues and the glutamic acid residue typical of metalloproteinases are lacking in the metalloproteinase-like domain of ADAM23. This suggests that ADAM23 may not be involved in protease-mediated events, but could exclusively serve in cell adhesion processes. In addition, evidence suggests that ADAM23 may be a tumor suppressor gene.

Product:

Rabbit IgG, 1mg/ml in PBS with 0.02% sodium azide, 50% glycerol, pH7.2

Molecular Weight:

~ 92 kDa

Swiss-Prot:

O75077

Purification&Purity:

The antibody was affinity-purified from rabbit antiserum by affinity-chromatography using epitope-specific immunogen and the purity is > 95% (by SDS-PAGE).

Applications:

WB: 1:500~1:1000

IHC: 1:50~1:200

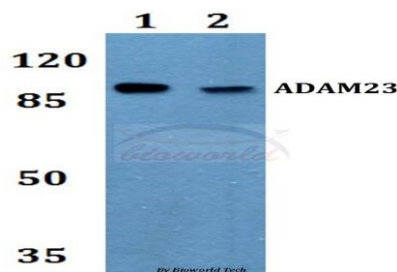
Storage&Stability:

Store at 4 °C short term. Aliquot and store at -20 °C long term. Avoid freeze-thaw cycles.

Specificity:

ADAM23 polyclonal antibody detects endogenous levels of ADAM23 protein.

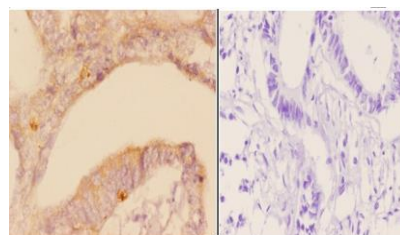
DATA:



Western blot (WB) analysis of ADAM23 polyclonal antibody at 1:500 dilution

Lane1:MCF-7 whole cell lysate

Lane2:Raw264.7 whole cell lysate



BS60091
Lot CN21141

Immunohistochemistry (IHC) analyzes of ADAM23 pAb in paraffin-embedded human rectum carcinoma tissue at 1:50, showing strong cytoplasmic staining. Negative control (the right) Using PBS instead of primary antibody, secondary antibody is Goat Anti-Rabbit IgG-biotin followed by avidin-peroxidase.

Note:

For research use only, not for use in diagnostic procedure.

Bioworld Technology, Inc.

Add: 1660 South Highway 100, Suite 500 St. Louis Park, MN 55416, USA.

Email: info@bioworld.com

Tel: 6123263284

Fax: 6122933841

Bioworld technology, co. Ltd.

Add: No 9, weidi road Qixia District Nanjing, 210046, P. R. China.

Email: info@biogol.com

Tel: 0086-025-68037686

Fax: 0086-025-68035151



PRODUCT DATA SHEET

Bioworld Technology, Inc.

Bioworld Technology, Inc.

Add: 1660 South Highway 100, Suite 500 St. Louis Park,
MN 55416, USA.

Email: info@bioworld.com

Tel: 6123263284

Fax: 6122933841

Bioworld technology, co. Ltd.

Add: No 9, weidi road Qixia District Nanjing, 210046,
P. R. China.

Email: info@biogot.com

Tel: 0086-025-68037686

Fax: 0086-025-68035151