

## LATS1 polyclonal antibody

Catalog: BS60042

Host: Rabbit

Reactivity: Human, Mouse, Rat

### BackGround:

The Drosophila tumor suppressor protein lats (for large tumor suppressor) is a putative protein kinase that shares homology with three proteins in Neurospora and budding yeast that are involved in cell cycle and growth regulation: *S. cerevisiae* Dbf2 and Dbf20, and Neurospora cot-1. Mosaic screens in Drosophila have identified the lats gene as a tumor suppressor in this species. The human homolog, designated LATS1, was shown to inhibit tumor growth in lats-deficient Drosophila. Human LATS1 binds to Cdc2 in early mitosis and appears to negatively regulate the kinase activity of Cdc2. LATS1-deficient mice are highly sensitive to carcinogenic treatments and develop soft-tissue sarcomas and ovarian stromal cell tumors, indicating a role for mammalian LATS1 in tumorigenesis.

### Product:

Rabbit IgG, 1mg/ml in PBS with 0.02% sodium azide, 50% glycerol, pH7.2

### Molecular Weight:

~ 140 kDa

### Swiss-Prot:

O95835

### Purification&Purity:

The antibody was affinity-purified from rabbit antiserum by affinity-chromatography using epitope-specific immunogen and the purity is > 95% (by SDS-PAGE).

### Applications:

WB: 1:500~1:1000

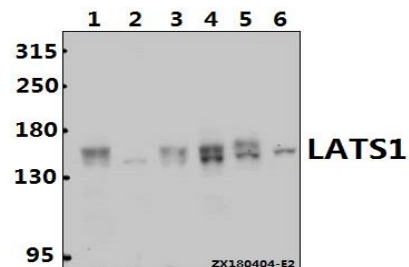
### Storage&Stability:

Store at 4 °C short term. Aliquot and store at -20 °C long term. Avoid freeze-thaw cycles.

### Specificity:

LATS1 polyclonal antibody detects endogenous levels of LATS1 protein.

### DATA:



Western blot (WB) analysis of LATS1 pAb at 1:500 dilution

Lane1:L02 whole cell lysate(40ug)

Lane2:Hela whole cell lysate(40ug)

Lane3:SGC7901 whole cell lysate(40ug)

Lane4:HEK293T whole cell lysate(40ug)

Lane5:A2780 whole cell lysate(40ug)

Lane6:The Embryo tissue lysate of Mouse(40ug)

### Note:

For research use only, not for use in diagnostic procedure.

### Bioworld Technology, Inc.

Add: 1660 South Highway 100, Suite 500 St. Louis Park, MN 55416, USA.

Email: [info@bioworld.com](mailto:info@bioworld.com)

Tel: 6123263284

Fax: 6122933841

### Bioworld technology, co. Ltd.

Add: No 9, weidi road Qixia District Nanjing, 210046, P. R. China.

Email: [info@biogot.com](mailto:info@biogot.com)

Tel: 0086-025-68037686

Fax: 0086-025-68035151