

## SSBP2 polyclonal antibody

Catalog: BS5946

Host: Rabbit

Reactivity: Human, Mouse, Rat

### BackGround:

The single-stranded-DNA-binding proteins (SSBs) are essential for DNA function in prokaryotic and eukaryotic cells, as well as in mitochondria, bacteria and viruses. SSBP2 (single-stranded DNA binding protein 2), also known as SSDP2, is a 361 amino acid protein that localizes to the nucleus and contains one LisH domain. Expressed ubiquitously, SSBP2 is thought to induce growth arrest in cancer cells and may, therefore, function as a potent tumor suppressor. The gene encoding SSBP2 maps to human chromosome 5, which contains 181 million base pairs and comprises nearly 6% of the human genome. Defects in chromosome 5-associated genes are related to the pathogenesis of Cockayne syndrome, familial adenomatous polyposis and Treacher Collins syndrome.

### Product:

Rabbit IgG, 1mg/ml in PBS with 0.02% sodium azide, 50% glycerol, pH7.2

### Molecular Weight:

~ 38 kDa

### Swiss-Prot:

P81877

### Purification&Purity:

The antibody was affinity-purified from rabbit antiserum by affinity-chromatography using epitope-specific immunogen and the purity is > 95% (by SDS-PAGE).

### Applications:

WB: 1:500~1:1000

IHC: 1:50~1:200

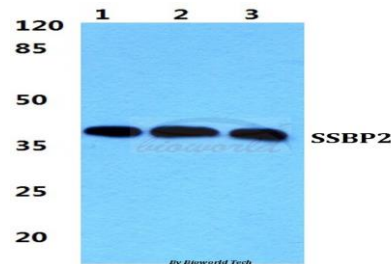
### Storage&Stability:

Store at 4 °C short term. Aliquot and store at -20 °C long term. Avoid freeze-thaw cycles.

### Specificity:

SSBP2 polyclonal antibody detects endogenous levels of SSBP2 protein.

### DATA:

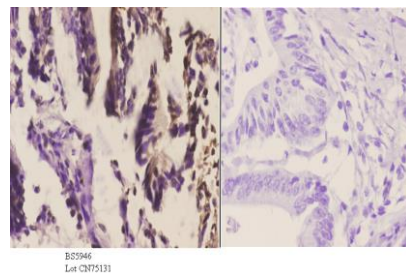


Western blot (WB) analysis of SSBP2 polyclonal antibody at 1:500 dilution

Lane1:HEK293T cell lysate

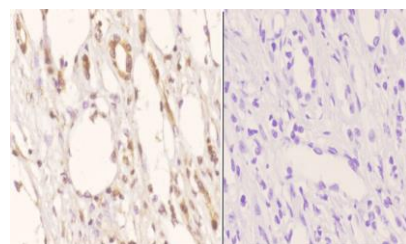
Lane2:NIH-3T3 cell lysate

Lane3:Rat kidney tissue lysate



BS5946  
Lot: CN75131

Immunohistochemistry (IHC) analyzes of SSBP2 pAb in paraffin-embedded human colon carcinoma tissue at 1:50. showing cytoplasmic and nucleus staining. Negative control (the right) Using PBS instead of primary antibody, secondary antibody is Goat Anti-Rabbit IgG-biotin followed by avidin-peroxidase.



BS5946  
Lot: CN75131

Immunohistochemistry (IHC) analyzes of SSBP2 pAb in paraffin-embedded human kidney carcinoma tissue at 1:50. showing cytoplasmic and nucleus staining. Negative control (the right) Using PBS instead of primary antibody, secondary antibody is Goat Anti-Rabbit

### Bioworld Technology, Inc.

Add: 1660 South Highway 100, Suite 500 St. Louis Park, MN 55416, USA.

Email: [info@bioworld.com](mailto:info@bioworld.com)

Tel: 6123263284

Fax: 6122933841

### Bioworld technology, co. Ltd.

Add: No 9, weidi road Qixia District Nanjing, 210046, P. R. China.

Email: [info@biogot.com](mailto:info@biogot.com)

Tel: 0086-025-68037686

Fax: 0086-025-68035151



## PRODUCT DATA SHEET

Bioworld Technology, Inc.

---

IgG-biotin followed by avidin-peroxidase.

For research use only, not for use in diagnostic procedure.

Note:

---

### **Bioworld Technology, Inc.**

**Add:** 1660 South Highway 100, Suite 500 St. Louis Park,  
MN 55416, USA.

**Email:** [info@bioworld.com](mailto:info@bioworld.com)

**Tel:** 6123263284

**Fax:** 6122933841

### **Bioworld technology, co. Ltd.**

**Add:** No 9, weidi road Qixia District Nanjing, 210046,  
P. R. China.

**Email:** [info@biogot.com](mailto:info@biogot.com)

**Tel:** 0086-025-68037686

**Fax:** 0086-025-68035151