

RIN1 polyclonal antibody

Catalog: BS5911

Host: Rabbit

Reactivity: Human

BackGround:

Ras is a membrane-associated small G protein that is indirectly coupled to receptor and nonreceptor tyrosine kinases. Ras activation is regulated by the levels of bound GTP and GDP. Several effectors of Ras have been identified, including Raf1, PI 3-kinase and RIN1. RIN1 (Ras interaction/interference) was identified as a Ras-interacting protein in yeast, and it has been shown to bind to the human H-Ras. This RIN1-Ras interaction is enhanced when Ras is bound to GTP. Unlike Raf1, RIN1 is localized primarily to the plasma membrane. RIN1 contains an SH2 domain and an amino-terminal region similar to consensus SH3 domains. RIN1 binds c-Abl and, like Raf1, interacts with 14-3-3 proteins.

Product:

Rabbit IgG, 1mg/ml in PBS with 0.02% sodium azide, 50% glycerol, pH7.2

Molecular Weight:

~ 85kDa

Swiss-Prot:

Q13671

Purification&Purity:

The antibody was affinity-purified from rabbit antiserum by affinity-chromatography using epitope-specific immunogen and the purity is > 95% (by SDS-PAGE).

Applications:

WB: 1:500~1:1000

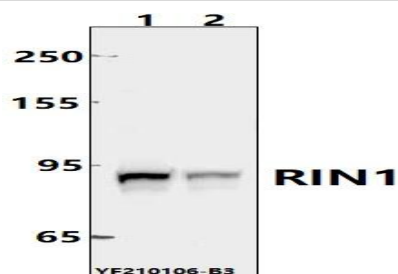
Storage&Stability:

Store at 4 °C short term. Aliquot and store at -20 °C long term. Avoid freeze-thaw cycles.

Specificity:

RIN1 polyclonal antibody detects endogenous levels of RIN1 protein.

DATA:



Western blot (WB) analysis of RIN1 pAb at 1:500 dilution

Lane1:U-87MG whole cell lysate(40ug)

Lane2:Panc1 whole cell lysate(40ug)

Note:

For research use only, not for use in diagnostic procedure.

Bioworld Technology, Inc.

Add: 1660 South Highway 100, Suite 500 St. Louis Park, MN 55416, USA.

Email: info@bioworld.com

Tel: 6123263284

Fax: 6122933841

Bioworld technology, co. Ltd.

Add: No 9, weidi road Qixia District Nanjing, 210046, P. R. China.

Email: info@biogot.com

Tel: 0086-025-68037686

Fax: 0086-025-68035151