

RPL17 polyclonal antibody

Catalog: BS5903

Host: Rabbit

Reactivity: Human, Mouse, Rat

BackGround:

Ribosomes, the organelles that catalyze protein synthesis, are composed of a small subunit (40S) and a large subunit (60S) that consist of over 80 distinct ribosomal proteins. Mammalian ribosomal proteins are encoded by multigene families that contain processed pseudogenes and one functional intron-containing gene within their coding regions. Ribosomal Protein L17, also known as RPL17, rpl23, PD-1 or 60S Ribosomal protein L17, is a 184 amino acid protein that is expressed in pancreas, lung, colon, cystic duct, gall bladder, kidney and liver and belongs to the ribosomal protein L22P family. Localized to the cytoplasm, it has been suggested that Ribosomal protein L17 may influence sexual differentiation of Area X and RA, potentially regulating the genesis and/or survival of neurons of juvenile zebra finches.

Product:

Rabbit IgG, 1mg/ml in PBS with 0.02% sodium azide, 50% glycerol, pH7.2

Molecular Weight:

~ 22 kDa

Swiss-Prot:

P18621

Purification&Purity:

The antibody was affinity-purified from rabbit antiserum by affinity-chromatography using epitope-specific immunogen and the purity is > 95% (by SDS-PAGE).

Applications:

WB: 1:500~1:1000

IHC: 1:50~1:200

ICC: 1:50~1:200

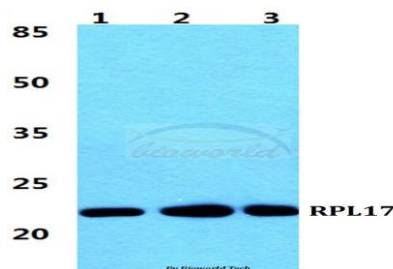
Storage&Stability:

Store at 4 °C short term. Aliquot and store at -20 °C long term. Avoid freeze-thaw cycles.

Specificity:

RPL17 polyclonal antibody detects endogenous levels of RPL17 protein.

DATA:



Western blot (WB) analysis of RPL17 polyclonal antibody at 1:500 dilution

Lane1:MCF-7 cell lysate

Lane2:Raw264.7 cell lysate

Lane3:H9C2 cell lysate

Note:

For research use only, not for use in diagnostic procedure.

Bioworld Technology, Inc.

Add: 1660 South Highway 100, Suite 500 St. Louis Park, MN 55416, USA.

Email: info@bioworld.com

Tel: 6123263284

Fax: 6122933841

Bioworld technology, co. Ltd.

Add: No 9, weidi road Qixia District Nanjing, 210046, P. R. China.

Email: info@biogot.com

Tel: 0086-025-68037686

Fax: 0086-025-68035151