

## Rho D polyclonal antibody

Catalog: BS5898

Host: Rabbit

Reactivity: Human, Mouse, Rat

### BackGround:

Upon activation, the small GTPase Rho D (also designated RhoHP1 and ARHD) contributes to rearrangement of the actin cytoskeleton and cell surface and also governs endosome motility and distribution. The effects of Rho D antagonize those of its family member, Rho A, by disassembling actin stress fibers normally enhanced by Rho A. Additionally, Rho D disengages focal adhesions, resulting in retardation of cell migration. Accordingly, transfection of a constitutively active form of Rho D (designated Rho D G26V) reverses the invasive phenotype of Gaolf induced cells, implying the possibility of a therapeutic use for activated Rho D in counteracting tumor metastasis.

### Product:

Rabbit IgG, 1mg/ml in PBS with 0.02% sodium azide, 50% glycerol, pH7.2

### Molecular Weight:

~ 23 kDa

### Swiss-Prot:

O00212

### Purification&Purity:

The antibody was affinity-purified from rabbit antiserum by affinity-chromatography using epitope-specific immunogen and the purity is > 95% (by SDS-PAGE).

### Applications:

WB: 1:500~1:1000

ICC: 1:50~1:200

IP: 1:50~1:200

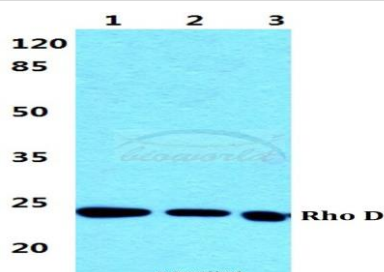
### Storage&Stability:

Store at 4 °C short term. Aliquot and store at -20 °C long term. Avoid freeze-thaw cycles.

### Specificity:

Rho D polyclonal antibody detects endogenous levels of Rho D protein.

### DATA:



Western blot (WB) analysis of Rho D polyclonal antibody at 1:500 dilution

Lane1:MCF-7 cell lysate

Lane2:Raw264.7 cell lysate

Lane3:H9C2 cell lysate

### Note:

For research use only, not for use in diagnostic procedure.

### Bioworld Technology, Inc.

Add: 1660 South Highway 100, Suite 500 St. Louis Park, MN 55416, USA.

Email: [info@bioworld.com](mailto:info@bioworld.com)

Tel: 6123263284

Fax: 6122933841

### Bioworld technology, co. Ltd.

Add: No 9, weidi road Qixia District Nanjing, 210046, P. R. China.

Email: [info@biogot.com](mailto:info@biogot.com)

Tel: 0086-025-68037686

Fax: 0086-025-68035151