

RFC2 polyclonal antibody

Catalog: BS5892

Host: Rabbit

Reactivity: Human, Mouse, Rat

BackGround:

Four of the five RFC genes (RFC1, RFC2, RFC3, and RFC4) have consensus ATP-binding motifs. The small RFC proteins, RFC2, RFC3, RFC4 and RFC5, interact with Rad24, whereas the RFC1 subunit does not. RFC2, the third-largest subunit of the RFC complex, exhibits ATP binding which makes it important for both DNA replication and checkpoint function. The human RFC2 gene maps to chromosome 7q11.23 and encodes the RFC2 subunit. RFC2 has been associated with Williams-Beuren syndrome, which is a rare multi-system developmental disorder caused by the deletion of contiguous genes at 7q11.23.

Product:

Rabbit IgG, 1mg/ml in PBS with 0.02% sodium azide, 50% glycerol, pH7.2

Molecular Weight:

~ 40 kDa

Swiss-Prot:

P35250

Purification&Purity:

The antibody was affinity-purified from rabbit antiserum by affinity-chromatography using epitope-specific immunogen and the purity is > 95% (by SDS-PAGE).

Applications:

WB: 1:500~1:1000

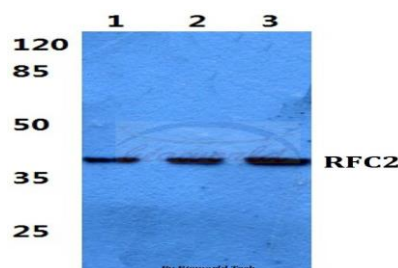
Storage&Stability:

Store at 4 °C short term. Aliquot and store at -20 °C long term. Avoid freeze-thaw cycles.

Specificity:

RFC2 polyclonal antibody detects endogenous levels of RFC2 protein.

DATA:



Western blot (WB) analysis of RFC2 polyclonal antibody at 1:500 dilution

Lane1:HEK293T cell lysate

Lane2:Raw264.7 cell lysate

Lane3:H9C2 cell lysate

Note:

For research use only, not for use in diagnostic procedure.

Bioworld Technology, Inc.

Add: 1660 South Highway 100, Suite 500 St. Louis Park, MN 55416, USA.

Email: info@bioworld.com

Tel: 6123263284

Fax: 6122933841

Bioworld technology, co. Ltd.

Add: No 9, weidi road Qixia District Nanjing, 210046, P. R. China.

Email: info@biogot.com

Tel: 0086-025-68037686

Fax: 0086-025-68035151