

Renin Receptor polyclonal antibody

Catalog: BS5887

Host: Rabbit

Reactivity: Human, Mouse

BackGround:

The Renin Receptor, also known as ATP6AP2 (ATPase H⁺-transporting lysosomal accessory protein 2), ATP6IP2 (ATPase H⁺-transporting lysosomal-interacting protein 2), CAPER or M8-9, is an ATPase-associated protein that functions as a Renin and prorenin cellular receptor. Expressed in the brain, heart, liver, kidney, placenta and pancreas, the Renin Receptor functions to activate ERK 1 and ERK 2, thereby mediating Renin-dependent cellular responses. The Renin Receptor has a subunit that associates with the transmembrane domain of V-type ATPases and interacts with Renin. These interactions increase the catalytic activity of Renin in the Renin-Angiotensin system (RAS), thus upregulating the conversion of angiotensinogen to Angiotensin.

Product:

Rabbit IgG, 1mg/ml in PBS with 0.02% sodium azide, 50% glycerol, pH7.2

Molecular Weight:

~ 43kDa

Swiss-Prot:

O75787

Purification&Purity:

The antibody was affinity-purified from rabbit antiserum by affinity-chromatography using epitope-specific immunogen and the purity is > 95% (by SDS-PAGE).

Applications:

WB: 1:500~1:1000

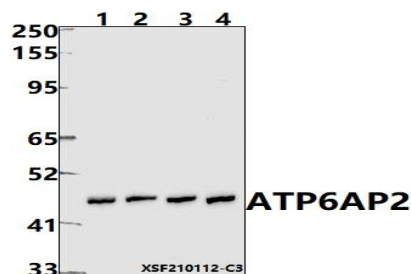
Storage&Stability:

Store at 4 °C short term. Aliquot and store at -20 °C long term. Avoid freeze-thaw cycles.

Specificity:

Renin Receptor polyclonal antibody detects endogenous levels of Renin Receptor protein.

DATA:



Western blot (WB) analysis of ATP6AP2 pAb at 1:500 dilution

Lane1:THP-1 whole cell lysate(40ug)

Lane2:HEK293T whole cell lysate(40ug)

Lane3:Hela whole cell lysate(40ug)

Lane4:CT-26 whole cell lysate(40ug)

Note:

For research use only, not for use in diagnostic procedure.

Bioworld Technology, Inc.

Add: 1660 South Highway 100, Suite 500 St. Louis Park, MN 55416, USA.

Email: info@bioworld.com

Tel: 6123263284

Fax: 6122933841

Bioworld technology, co. Ltd.

Add: No 9, weidi road Qixia District Nanjing, 210046, P. R. China.

Email: info@biogot.com

Tel: 0086-025-68037686

Fax: 0086-025-68035151