

ARG1 polyclonal antibody

Catalog: BS5618

Host: Rabbit

Reactivity: Human

BackGround:

Arginase I (also designated liver-type arginase), which is expressed almost exclusively in the liver, catalyzes the conversion of arginine to ornithine and urea. The human arginase I gene, which maps to chromosome 6q23, encodes a 322 amino acid protein. Arginase I exists as a homotrimeric protein and contains a binuclear manganese cluster. Arginase II catalyzes the same reaction as arginase I, but differs in its tissue specificity and subcellular location. Specifically, arginase II localizes to the mitochondria.

Product:

Rabbit IgG, 1mg/ml in PBS with 0.02% sodium azide, 50% glycerol, pH7.2

Molecular Weight:

~ 38 kDa

Swiss-Prot:

P05089

Purification&Purity:

The antibody was affinity-purified from rabbit antiserum by affinity-chromatography using epitope-specific immunogen and the purity is > 95% (by SDS-PAGE).

Applications:

WB: 1:500~1:1000

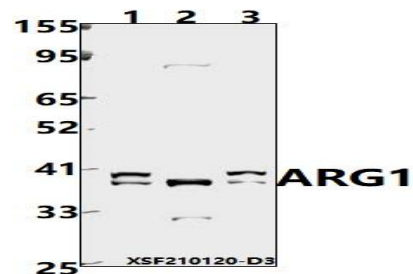
Storage&Stability:

Store at 4 °C short term. Aliquot and store at -20 °C long term. Avoid freeze-thaw cycles.

Specificity:

ARG1 polyclonal antibody detects endogenous levels of ARG1 protein.

DATA:



Western blot (WB) analysis of ARG1 pAb at 1:500 dilution

Lane1:HepG2 whole cell lysate(40ug)

Lane2:SHSY5Y whole cell lysate(40ug)

Lane3:A549 whole cell lysate(40ug)

Note:

For research use only, not for use in diagnostic procedure.

Bioworld Technology, Inc.

Add: 1660 South Highway 100, Suite 500 St. Louis Park, MN 55416, USA.

Email: info@bioworld.com

Tel: 6123263284

Fax: 6122933841

Bioworld technology, co. Ltd.

Add: No 9, weidi road Qixia District Nanjing, 210046, P. R. China.

Email: info@biogot.com

Tel: 0086-025-68037686

Fax: 0086-025-68035151