

## ADCY9 polyclonal antibody

Catalog: BS5590

Host: Rabbit

Reactivity: Human, Mouse, Rat

### Background:

Adenylyl cyclases function to convert ATP to cyclic AMP in response to activation by a variety of hormones, neurotransmitters and other regulatory molecules. Cyclic AMP, in turn, activates several other target molecules (primarily cyclic AMP-dependent protein kinases) to control a broad range of diverse phenomena such as metabolism, gene transcription and memory. Classically, adenylyl cyclases respond to receptor-initiated signals, mediated by the Gs and Gi heterotrimeric G proteins. The binding of an agonist to a Gs-coupled receptor (i.e.,  $\alpha$   $\beta$ -adrenergic receptor) catalyzes the exchange of GDP (bound to G $\alpha$  s) for GTP, dissociation of GTP-G $\alpha$  s from G $\beta$   $\gamma$  and G $\alpha$  s-mediated activation of adenylyl cyclase. The most abundant cerebral adenylyl cyclases appears to be adenylyl cyclase IX. AC IX is confined to the gray matter and its expression is mainly neuronal, with its highest expression located at the hippocampus. ACIX is also expressed in heart, pancreas and thyrocytes. AC I and AC IX are regulated reciprocally by intracellular free Ca<sup>2+</sup>. The inhibition of AC IX by Ca<sup>2+</sup> is blocked by the calcineurin inhibitors FK506 and cyclosporin A.

### Product:

Rabbit IgG, 1mg/ml in PBS with 0.02% sodium azide, 50% glycerol, pH7.2

### Molecular Weight:

~ 161 kDa

### Swiss-Prot:

O60503

### Purification&Purity:

The antibody was affinity-purified from rabbit antiserum by affinity-chromatography using epitope-specific immunogen and the purity is > 95% (by SDS-PAGE).

### Applications:

WB:1:500~1:1000

IHC:1:50~1:200

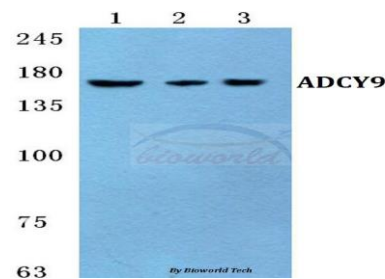
### Storage&Stability:

Store at 4 °C short term. Aliquot and store at -20 °C long term. Avoid freeze-thaw cycles.

### Specificity:

ADCY9 polyclonal antibody detects endogenous levels of ADCY9 protein.

### DATA:

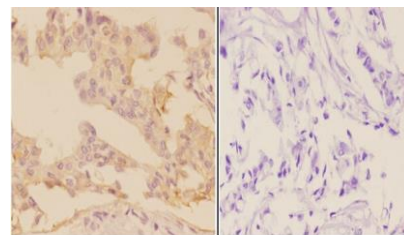


Western blot (WB) analysis of ADCY9 polyclonal antibody at 1:500 dilution

Lane1:Hela cell lysate

Lane2:sp2/0 cell lysate

Lane3:PC12 cell lysate



BS5590  
Lot CN75131

Immunohistochemistry (IHC) analyzes of ADCY9 pAb in paraffin-embedded human breast carcinoma tissue at 1:50, showing cytoplasm and membrane staining. Negative control (the right) Using PBS instead of primary antibody, secondary antibody is Goat Anti-Rabbit IgG-biotin followed by avidin-peroxidase.

### Bioworld Technology, Inc.

Add: 1660 South Highway 100, Suite 500 St. Louis Park, MN 55416, USA.

Email: [info@bioworld.com](mailto:info@bioworld.com)

Tel: 6123263284

Fax: 6122933841

### Bioworld technology, co. Ltd.

Add: No 9, weidi road Qixia District Nanjing, 210046, P. R. China.

Email: [info@biogot.com](mailto:info@biogot.com)

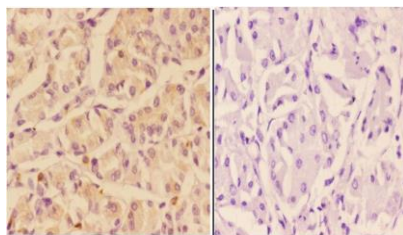
Tel: 0086-025-68037686

Fax: 0086-025-68035151



## PRODUCT DATA SHEET

Bioworld Technology, Inc.



BSS590  
Lot CN75131

Immunohistochemistry (IHC) analyzes of ADCY9 pAb in paraffin-embedded human stomach carcinoma tissue at 1:50, showing cytoplasm and membrane staining. Negative control (the right) Using PBS instead of primary antibody, secondary antibody is Goat Anti-Rabbit IgG-biotin followed by avidin-peroxidase.

### Note:

For research use only, not for use in diagnostic procedure.

### Bioworld Technology, Inc.

Add: 1660 South Highway 100, Suite 500 St. Louis Park,  
MN 55416, USA.

Email: [info@bioworld.com](mailto:info@bioworld.com)

Tel: 6123263284

Fax: 6122933841

### Bioworld technology, co. Ltd.

Add: No 9, weidi road Qixia District Nanjing, 210046,  
P. R. China.

Email: [info@biogot.com](mailto:info@biogot.com)

Tel: 0086-025-68037686

Fax: 0086-025-68035151