

ASK1 (V972) polyclonal antibody

Catalog: BS5555

Host: Rabbit

Reactivity: Human, Mouse, Rat

BackGround:

Mitogen-activated protein (MAP) kinase cascades are activated by various extracellular stimuli including growth factors. The MEK kinases (also called MAP kinase kinases) phosphorylate and activate the MAP kinases, including ERK, JNK and p38. The MEK kinases characterized to date include Raf-1, Raf-B, MOS, MEK kinase-1, MEK kinase-2, MEK kinase-3, MEK kinase-4 and ASK 1 (also designated MEK kinase-5). MEK kinase-1 has been shown to phosphorylate MEK-1 via a Raf-independent pathway. Evidence suggests that MEK-3 is preferentially activated by MEK kinase-3 and that MEK-4 is activated by both MEK kinase-2 and MEK kinase-3. MEK kinase-4 has been shown to specifically activate the JNK pathway. ASK 1 activates both MEK-4 and MEK-3/MEK-6 pathways.

Product:

Rabbit IgG, 1mg/ml in PBS with 0.02% sodium azide, 50% glycerol, pH7.2

Molecular Weight:

~ 155 kDa

Swiss-Prot:

Q99683

Purification&Purity:

The antibody was affinity-purified from rabbit antiserum by affinity-chromatography using epitope-specific im-

munogen and the purity is > 95% (by SDS-PAGE).

Applications:

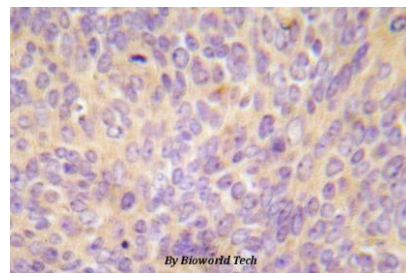
IHC: 1:50~1:200

Storage&Stability:

Store at 4 °C short term. Aliquot and store at -20 °C long term. Avoid freeze-thaw cycles.

Specificity:

ASK1 (V972) polyclonal antibody detects endogenous levels of ASK1 protein.

DATA:

Immunohistochemistry (IHC) analyzes of ASK1 (V972) pAb in paraffin-embedded human lung adenocarcinoma tissue.

Note:

For research use only, not for use in diagnostic procedure.

Bioworld Technology, Inc.

Add: 1660 South Highway 100, Suite 500 St. Louis Park, MN 55416, USA.

Email: info@bioworld.com

Tel: 6123263284

Fax: 6122933841

Bioworld technology, co. Ltd.

Add: No 9, weidi road Qixia District Nanjing, 210046, P. R. China.

Email: info@biogot.com

Tel: 0086-025-68037686

Fax: 0086-025-68035151