

CaMKII α (K292) polyclonal antibody

Catalog: BS5510

Host: Rabbit

Reactivity: Human, Mouse, Rat

BackGround:

The Ca²⁺/calmodulin-dependent protein kinases (CaM kinases) comprise a structurally related subfamily of serine/threonine kinases which include CaMKI, CaMKII and CaMKIV. CaMKII is an ubiquitously expressed serine/threonine protein kinase that is activated by Ca²⁺ and calmodulin (CaM) and has been implicated in regulation of the cell cycle and transcription. There are four CaMKII isozymes, designated α , β , γ and δ , which may or may not be co-expressed in the same tissue type. CaMKII α is autophosphorylated on Thr 286 upon the binding of the Ca²⁺/CaM complex to the autoinhibitory domain of CaMKII. This process is called Ca²⁺/CaM trapping, which is thought to be involved in the synaptic encoding of information.

Product:

Rabbit IgG, 1mg/ml in PBS with 0.02% sodium azide, 50% glycerol, pH7.2

Molecular Weight:

~ 54 kDa

Swiss-Prot:

Q9UQM7

Purification&Purity:

The antibody was affinity-purified from rabbit antiserum by affinity-chromatography using epitope-specific immunogen and the purity is > 95% (by SDS-PAGE).

Applications:

WB: 1:500~1:1000

IHC: 1:50~1:200

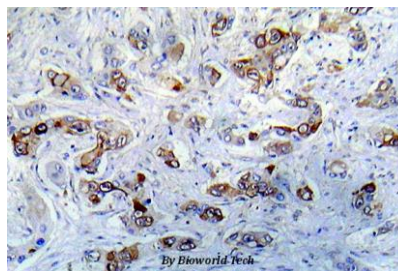
Storage&Stability:

Store at 4 °C short term. Aliquot and store at -20 °C long term. Avoid freeze-thaw cycles.

Specificity:

CaMK2-a (K292) polyclonal antibody detects endogenous levels of CaMK2-a protein.

DATA:



Immunohistochemistry (IHC) analyzes of CaMK2-a (K292) pAb in paraffin-embedded human A431 tissue.

Note:

For research use only, not for use in diagnostic procedure.

Bioworld Technology, Inc.

Add: 1660 South Highway 100, Suite 500 St. Louis Park, MN 55416, USA.

Email: info@bioworld.com

Tel: 6123263284

Fax: 6122933841

Bioworld technology, co. Ltd.

Add: No 9, weidi road Qixia District Nanjing, 210046, P. R. China.

Email: info@biogot.com

Tel: 0086-025-68037686

Fax: 0086-025-68035151