

Cofilin 1 (phospho-S3) polyclonal antibody

Catalog: BS5063

Host: Rabbit

Reactivity: Human, Mouse, Rat

BackGround:

Cofilin is ubiquitously expressed in eukaryotic cells where it binds to Actin, thereby regulating the rapid cycling of Actin assembly and disassembly, essential for cellular viability. Cofilin is a low molecular weight protein that binds to filamentous F-Actin by bridging two longitudinally-associated Actin subunits, changing the F-Actin filament twist. This process is allowed by the dephosphorylation of Cofilin Ser 3 by factors like opsonized zymosan. LIM kinase 1 (LIMK-1), a serine kinase, phosphorylates Cofilin and renders it unable to bind and depolymerize F-Actin.

Product:

Rabbit IgG, 1mg/ml in PBS with 0.02% sodium azide, 50% glycerol, pH7.2

Molecular Weight:

~ 19 kDa

Swiss-Prot:

P23528

Purification&Purity:

The antibody was affinity-purified from rabbit antiserum by affinity-chromatography using epitope-specific immunogen and the purity is > 95% (by SDS-PAGE).

Applications:

IHC: 1:50~1:200

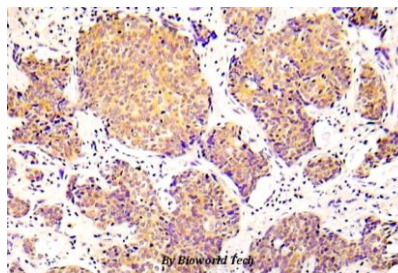
Storage&Stability:

Store at 4 °C short term. Aliquot and store at -20 °C long term. Avoid freeze-thaw cycles.

Specificity:

p-COIFLN1 (S3) polyclonal antibody detects endogenous levels of COIFLN1 protein only when phosphorylated at Ser3.

DATA:



Immunohistochemistry (IHC) analyzes of p-COIFLN1 (S3) pAb in paraffin-embedded human lung adenocarcinoma tissue.

Note:

For research use only, not for use in diagnostic procedure.

Bioworld Technology, Inc.

Add: 1660 South Highway 100, Suite 500 St. Louis Park, MN 55416, USA.

Email: info@bioworld.com

Tel: 6123263284

Fax: 6122933841

Bioworld technology, co. Ltd.

Add: No 9, weidi road Qixia District Nanjing, 210046, P. R. China.

Email: info@biogot.com

Tel: 0086-025-68037686

Fax: 0086-025-68035151