

## p130 Cas (phospho-Y249) polyclonal antibody

Catalog: BS4849

Host: Rabbit

Reactivity: Human, Mouse, Rat

### BackGround:

The p130Cas (Cas for Crk-associated substrate) is a common cellular target of phosphorylation signal via v-Crk and v-Src oncoproteins. p130Cas has a unique structure that contains a Src homology (SH)-3 domain followed by multiple YXXP motifs and a proline-rich region. p130Cas is implicated in a variety of biological processes including cell adhesion, cell migration, growth factor stimulation, cytokine receptor engagement and bacterial infection. Physiological functions of p130Cas include cardiovascular development, actin filament assembly and Src-induced cell transformation.

### Product:

Rabbit IgG, 1mg/ml in PBS with 0.02% sodium azide, 50% glycerol, pH7.2

### Molecular Weight:

~ 130 kDa

### Swiss-Prot:

P56945

### Purification&Purity:

The antibody was affinity-purified from rabbit antiserum by affinity-chromatography using epitope-specific immunogen and the purity is > 95% (by SDS-PAGE).

### Applications:

WB: 1:500~1:1000

IHC: 1:50~1:200

ICC: 1:50~1:200

### Storage&Stability:

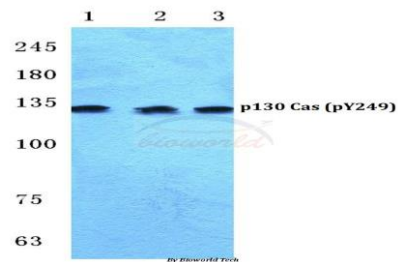
Store at 4 °C short term. Aliquot and store at -20 °C long term. Avoid freeze-thaw cycles.

### Specificity:

p-p130 Cas (Y410) polyclonal antibody detects endogenous levels of p130 Cas protein only when phosphory-

lated at Tyr410.

### DATA:

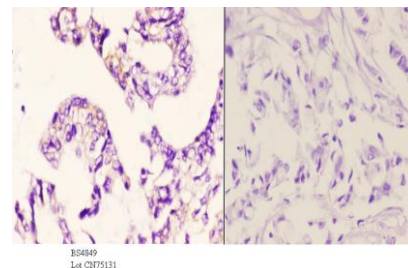


Western blot (WB) analysis of p-p130 Cas (Y249) polyclonal antibody at 1:500 dilution

Lane1: HEK293T cell lysate treated with EGF(0.1ng/ML, 30mins)

Lane2: Raw264.7 cell lysate treated with EGF(0.1ng/ML, 30mins)

Lane3: PC12 cell lysate treated with EGF(0.1ng/ML, 30mins)



Immunohistochemistry (IHC) analyzes of p-p130 Cas (Y249) pAb in paraffin-embedded human breast carcinoma tissue at 1:50, showing cytoplasmic staining. Negative control (the right) Using PBS instead of primary antibody, secondary antibody is Goat Anti-Rabbit IgG-biotin followed by avidin-peroxidase.

### Note:

For research use only, not for use in diagnostic procedure.

### Bioworld Technology, Inc.

Add: 1660 South Highway 100, Suite 500 St. Louis Park, MN 55416, USA.

Email: [info@bioworld.com](mailto:info@bioworld.com)

Tel: 6123263284

Fax: 6122933841

### Bioworld technology, co. Ltd.

Add: No 9, weidi road Qixia District Nanjing, 210046, P. R. China.

Email: [info@biogot.com](mailto:info@biogot.com)

Tel: 0086-025-68037686

Fax: 0086-025-68035151