

NF2/Merlin (phospho-S518) polyclonal antibody

Catalog: BS4800

Host: Rabbit

Reactivity: Human, Mouse, Rat

BackGround:

Neurofibromin 2 (NF2) is a tumor suppressor gene encoding the protein Merlin. Merlin is closely related to the ERM (ezrin, radixin, moesin) family of proteins. The precise function of Merlin is not clear. It is thought to provide a link between the actin cytoskeleton and membrane associated proteins, playing a role in transduction of extracellular signals. It has been implicated in cell proliferation and cellular motility. Mutations in the NF2 gene cause neurofibromatosis type II, a condition characterized by the development of tumors in the central nervous system.

Product:

Rabbit IgG, 1mg/ml in PBS with 0.02% sodium azide, 50% glycerol, pH7.2

Molecular Weight:

~ 70 kDa

Swiss-Prot:

P35240

Purification&Purity:

The antibody was affinity-purified from rabbit antiserum by affinity-chromatography using epitope-specific immunogen and the purity is > 95% (by SDS-PAGE).

Applications:

WB: 1:500~1:1000

IF: 1:50~1:200

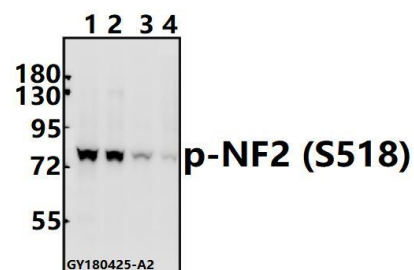
Storage&Stability:

Store at 4 °C short term. Aliquot and store at -20 °C long term. Avoid freeze-thaw cycles.

Specificity:

p-NF2/Merlin (S518) polyclonal antibody detects endogenous levels of NF2/Merlin protein only when phosphorylated at Ser518

DATA:



Western blot (WB) analysis of p-NF2 (S518) pAb at 1:500 dilution

Lane1:A375 whole cell lysate(40ug)

Lane2:Hela whole cell lysate(40ug)

Lane3:The Uterus tissue lysate of Rat(40ug)

Lane4:CT26 whole cell lysate(40ug)

Note:

For research use only, not for use in diagnostic procedure.

Bioworld Technology, Inc.

Add: 1660 South Highway 100, Suite 500 St. Louis Park, MN 55416, USA.

Email: info@bioworld.com

Tel: 6123263284

Fax: 6122933841

Bioworld technology, co. Ltd.

Add: No 9, weidi road Qixia District Nanjing, 210046, P. R. China.

Email: info@biogot.com

Tel: 0086-025-68037686

Fax: 0086-025-68035151